

# SOS Signal

July 1999

Whole Number 8

## What's in a name?

- Has the time come to modernize our name? Some of our long time members think the time is here. Read about it on page 11.
- Yes, that US Daffy Duck stamp on your envelope is a bona-fide SOS! See the new issue listings on page 6.



## Inside this issue:

SOS Problems at Nauru	2
Stamps Under Glass	4
New Issues	6
SOSCU News/Classifieds	7
Mutiny on the Bounty	8
SOS Library Displays	9
Auction and Treasurer	10
About Our Name	11
New Issues Illustrated	12

## Stamps Under Glass (SUG's Revisited)

By Judy Hornaday

In 1994, Robert Graves, then silver-tongued editor of the *SOS Signal*, invited me to write an article for our newsletter. Stamps on Stamps Under Magnifying Glasses was published in the 1994-4 issue. Our new equally persuasive editor has engaged me to revisit and update that popular theme, which I fondly call SUG's (stamps under glass).

In the original article (copy available on request with SASE), there were 71 stamps identified in the Under Magnifying Glasses sub-category of SOS's. The earliest one, Austria B268, was issued in 1949 for Stamp Day.

Five years have passed since that first list was compiled. Lou Guadagno has kindly assisted me in identifying some that were overlooked in the first round, and we've added 21 items, including a postal card. But there has been a surge in new-issue SUG's – 22 since the first article. Thus (not counting varieties, such as souvenir sheets with the same stamp), the grand total is now 114. A listing of these stamps with all the newly-identified or newly-issued SUG's underlined is available from the author or the editor. Please see the bottom of

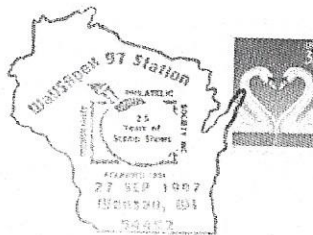
page 4 for ordering information.

While the original list included only stamps or souvenir sheets, this list has been expanded to include virtually anything that could fit the SUG category. First, already mentioned, there is quite a nice Japanese postal card issued for Philakorea in 1984 (please see page 5). Second, thanks to Bill Critzer, I have been able to add a SUG postal envelope – a gorgeous 1998 issue from Australia to commemorate the 50<sup>th</sup> anniversary of the Australasian Philatelic Traders' Association, featuring one of their first stamps, the 2 cent kangaroo and map of 1913 (please see page 5).

Other related material includes SUG cancellations on covers, of which I've managed to obtain three from the United States in the past couple years. I think you'll agree that they are unique, choice cancellations. I have also obtained two Phone Cards (PhilaTelecards) with United States SUG's. These were both issued 1/1/1995, and are numbered, limited editions of 2000 each.

Three of the SUG's reproduce earlier SUG's, and are therefore SOSOS's

(Continued on page 4)





# Stamps on Stamps Pose Problems !

By Kenneth R. Lake AJP

During my stint as philatelic consultant to the Republic of Nauru from 1971 to 1981, I ran into plenty of difficulties – but few more complex than the preparation of the 1976 '60 Years of Nauru Stamps' issue with its stamp on stamp designs.

Nauru's homegrown Philatelic Advisory Panel accepted my proposal for a four stamp set, with the illustrated stamps matching the new denominations: \$1 was equal to 50p (10s.), so I placed the 3d. and 9d. on a 20c. stamp, the 6d. and 1s. on the 15c., the 2s.6d. Seahorse on the 25c. value and, of course, the 5s. Seahorse on a 50c. stamp. So far, so good.

The problem lay in the fact that there were several printings of the basic GB stamps, each with its own shade variation; no issue dates were announced for the overprinted versions, so we couldn't decide which shade was the original one — and, of course, tropicalisation and age affected the colour of the papers and gums.

Nauru specialist Keith de Vere Buckingham offered not only expert advice but the loan of some rare varieties; a selection of these was then passed to noted stamp artists Michael and Sylvia Goaman, who produced excellent artwork in a clean modern style. The designs slightly reduce the size of the GB stamps, not only to avoid anyone cutting them out and trying to pass them off as originals, but to leave space for clear inscriptions to explain the purpose of issue.

## The story behind the original stamps

The original GB King George V 3d., 9d. and 1s. were printed by Harrison & Sons. The Board of Inland Revenue – then responsible for stamps appropriate to the payment of stamp duty – printed the 6d. value which were all letterpress printed. The high-value Seahorses came from both Waterlow Bros & Layton and De La Rue & Co, and were printed from 'intaglio' (recess) plates. The new Nauru stamps were to be printed by Format International Security Printers Ltd by offset lithography; this is normally done in four basic colors and imparts the flat, smooth, glossy appearance required for modern stamps.

The accuracy we needed certainly could not be obtained in this way, so we knew we had a hard task ahead; offset lithography could not adequately reproduce the 'feel' of the original stamps, if only because they were printed on different types of soft, porous paper, in different thicknesses and with different surfacing and inks from the modern high-gloss 'optical white' paper and lithographic inks now in use for stamp printing.

The central designs were made by photographing the original stamps and then retouching blown-up

bromide prints to provide the necessary fineness of line. These were then reduced to the correct size and fitted into the Goamans' new border design by the printers. Colors were carefully matched by mixing inks by hand and making technical comparisons; these were confused to the naked eye by the contrasting papers, and by the fact that old-style recess printing forces tiny strands of color into the paper and around the clearly-engraved lines of the steel plates – this does not occur with offset-litho printing methods. Finally there is the problem that modern inks, no matter how carefully matched in color, are more refined and 'harder' in appearance when actually printed.

The first proofs produced by the printers showed there was still room for improvement. The 3d. was carefully retouched to obviate a muddy appearance and too-heavy color; the 2s.6d. and the 5s. designs were re-proofed in warmer, softer shades. Even this didn't look right, so I had the paper treated with a cream underprinting on which the stamp designs were superimposed: the result was a warm, soft reproduction that comes closer than any earlier attempt to match the originals. At this point I forwarded the proofs to Nauru, and sat back to await their plaudits – the designers, the printers and I had done a grand job, and we were proud of the results.

## An unforeseen problem !

Unfortunately Nauru possessed an ancient 'official collection' of early stamps, essays and artists' drawings. This was kept in relatively stable air-conditioned conditions in a government office, but for the previous fifty years had been left to molder in often extremely wet tropical conditions – Nauru is just 28 miles from the Equator, in the middle of the Pacific Ocean!

As a result, the gums had tropicalised to shades of brown which seriously affected the colors of the inks; unaware of this effect, the Philatelic Advisory Panel naturally compared the modern proofs with these sad remnants – and telexed back complaints that all the colors were wrong!

It took no little frenzied telexed correspondence to explain the facts, and to persuade the Panel to change its collective mind. We were working to the usual far-too-tight deadlines, and every day counted. Nauru is twelve hours ahead of GMT; this meant today's telex arrived the middle of tomorrow night. If they were lucky enough to reach a conclusion speedily, their next-day reply reached London in the middle of the night again. All telexes went to the Nauru Government Of-

*(Continued on page 3)*



# Stamps on Stamps Pose Problems !

By Kenneth R. Lake AIJP

*(Continued from page 2)*

fice, and had to be delivered to my offices by hand; weekends and public holidays wreaked their usual havoc, and everyone sweated tears of blood and frustration. Finally we got the go-ahead.

Thanks to Keith Buckingham's kindness we were able to incorporate some rare errors into the stamps as reproduced: the 3d. Has the 'short left stroke to N' variety, and the 6d. the 'P for R' error. The 5s. bears not only the NAURU overprint but the smaller separate italic *SPECIMEN* overprint applied by the printers to only some 300 copies: these were supplied to the UPU for distribution to member countries as proof that they were genuine official issues from Nauru.

### How it all came out

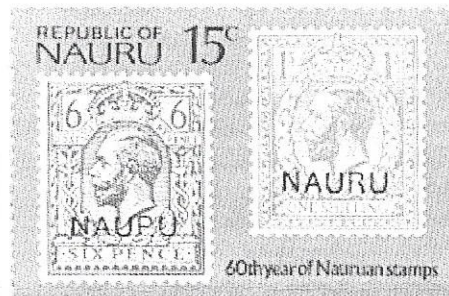
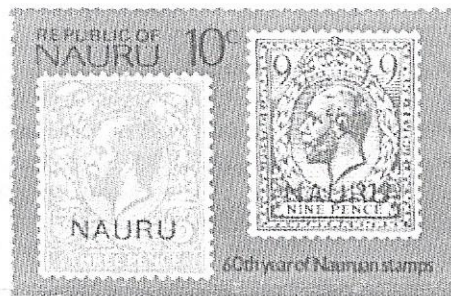
Despite all our efforts I would not claim that the Format commemoratives are exactly like the original stamps – that was impossible, and even today with new techniques would be beyond the power of any printer unless perhaps he reverted to old-style papers, gums and presses! For all that, I think Format gave a very

good general impression of the stamps as they were when first issued – not after moldering in old albums for sixty years – and that this set brought to the album that 'something different' that helps collectors grasp something of the country's postal history.

The set was issued on 6 May 1976, World Stamp Day and the 136th anniversary of the issue of the world's first stamp, our own Penny Black. As with all Nauruan stamps it remained on sale at the island post office for one month, at the Nauru Philatelic Bureau, the London Nauru Philatelic Agency, and across the counters of Australia Post offices, for a year from the date of issue: unsold remainders were officially destroyed.

*This article first appeared in 'Gibbons Stamp Monthly' for September, 1997, and is reprinted with the permission of its editor, Hugh Jeffries.*

*SOSCU member Dave Jackson of the UK brought this article to our attention and obtained written permission to use it. Thank you Dave; your alert and helpful actions provided a provocative and interesting piece.*



Scott # 138-41 clockwise from upper left reproduce Nauru #7, 11, 10, 12, 14 and 13 respectively: The reproduced stamps were issued in October, 1916. The stamps above are shown at 125% of actual size.



# Stamps Under Glass (SUG's Revisited)

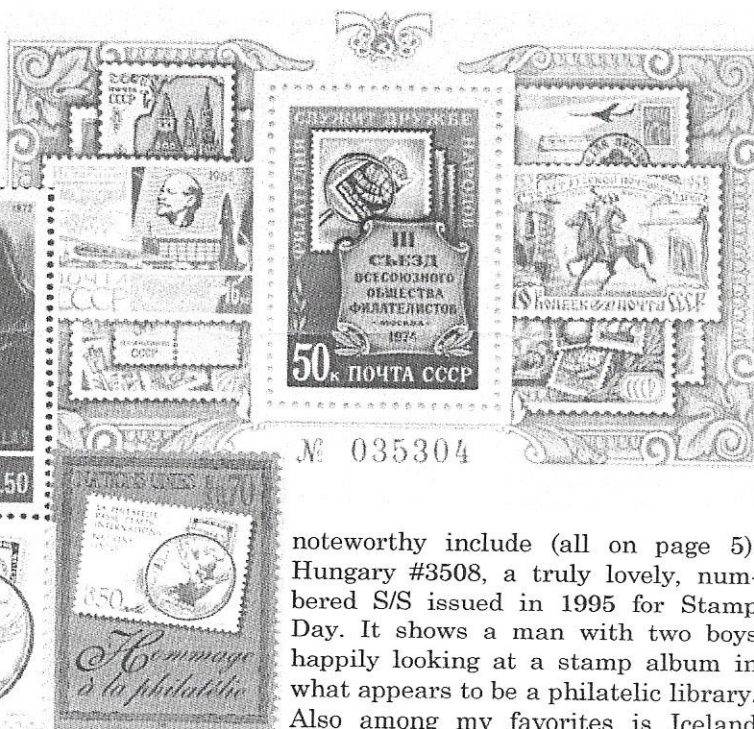
By Judy Hornaday

(stamp on stamp on stamp). I am particularly fond of SOSOS's, because they are so limited in number and because they invariably have been issued to emphasize the value of stamp collecting. The first SUG SOSOS was issued in 1974 by Russia (#4245) to commemorate the Development of the Postal Service. It is quite an eye-catching S/S, with several other Russian stamps clearly replicated in the margin. It depicts Russia #2325, which was issued for Stamp Day in 1960, showing Russian #1981 issued in 1957 for World Peace. In 1978 Greece honored the 150<sup>th</sup> Anniversary of the Greek Postal Service (#1252 shown); it depicts Greece #1062 which was issued for Stamp Day in 1972.

And more recently, in 1997, the United Nations' Tribute to Philately series (#312 for Geneva and #714 for New York) duplicated the 1986 UN Stamp Collecting stamps (#146 for Geneva and #473 for New York). The clarity in both the Greek and UN issues makes these particularly excellent SOSOS specimens.

In 1990 Salvador (#1230) issued a S/S for the 50<sup>th</sup> Anniversary of the Philatelic Society. It shows a modified Salvador #1197 (with the value changed from 25c to a 2.00 colon airmail) issued in 1989 to Promote Philately, as well as 4 other earlier Salvadorian stamps. This seems to me to be a variation on a SOSOS.

Other newly-added SUG's which I personally find



noteworthy include (all on page 5): Hungary #3508, a truly lovely, numbered S/S issued in 1995 for Stamp Day. It shows a man with two boys happily looking at a stamp album in what appears to be a philatelic library. Also among my favorites is Iceland #789 issued in 1994 for Stamp Day.

This is a S/S in a strip format with a se-tenant type design. The left stamp shows a boy and girl examining a stamp album; the center SUG stamp shows Iceland #672, 713 (under magnification) and others, and the right stamp shows a girl and elderly man looking at a globe. This S/S was sold for 200k (face value totals 165k) for the benefit of the Stamp and Postal History Fund. And lastly, I call your attention to the 1996 issue from Germany (#1939) to honor the 50<sup>th</sup> Anniversary of the Association of German Philatelists. While this is merely a Type SY (pseudo stamp) SUG, it has the unique feature of SUG's in the margin of the pane.

As before, I welcome any additions which readers may identify for the checklist. Even though this is a relatively small subtopic, the challenge of acquiring all stamps on the list still eludes me – part of what keeps all collectors motivated!

Please take some time to review your own collections and to consider SOS subtopics that interest you. I know our Editor encourages and welcomes other contributions for the newsletter.

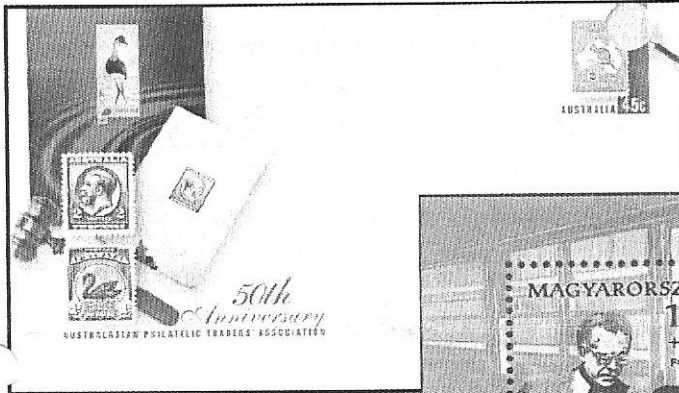
Author Judy Hornaday is a mainstay of SOSCU. She is a past Secretary-Treasurer and currently provides new issue stamps and information for the Signal. To receive the complete SUG list send an SASE to Judy at 22446 Estallens, Mission Viejo, CA 92692, or to the editor at the address on page 12.





# Stamps Under Glass (SUG's Revisited)

By Judy Hornaday



Left: Australia postal stationery issue of 10/08/98



Right: Japan Philakorea issue of 1984 on postal card indicium



Hungary #3508, 1995

Indonesia #1702, 1997

Iceland #789(b), 1994

Germany #1939, 1996

Ethiopia #1380, 1994



Above; Mozambique #1278, 1996



Below; Malaysia #645e, 1997

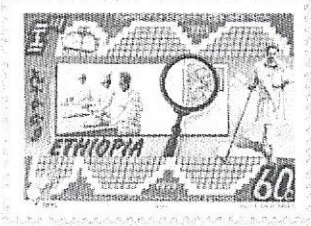
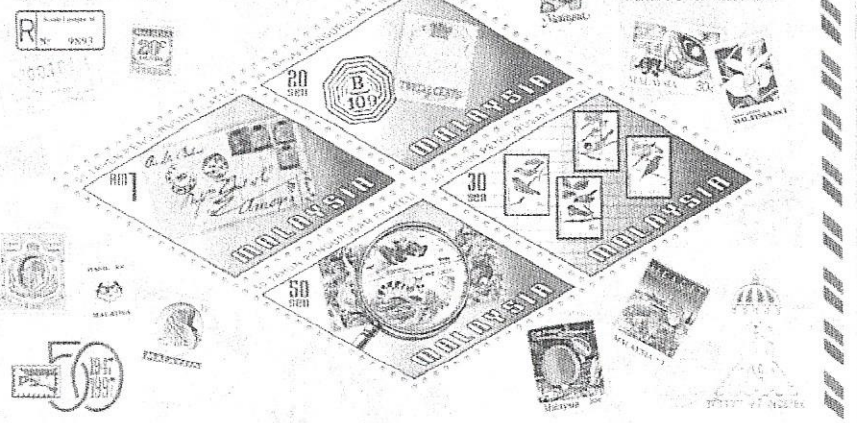


FRÍMERKJASÖFNUN

DAGUR FRÍMERKISINS 7. OKTÓBER 1994 - VERÐ KR 200



50 Tahun Pengurusan Filateli  
50 Years of Organised Philately





# New Issues

edited by Bill Critzer and Judy Hornaday

\*= New on List

<u>Date</u>	<u>Country</u>	<u>Values</u>	<u>Stamp Reproduced</u>	<u>Reason</u>	<u>Scott #</u>
98 10 09	Iceland	35k	Reminiscent of 1873 Type	125th Anniversary Icelandic Stamps	865
98 07 00	Romania	700, 1050 l	Romania #1, 4	140th Anniversary of Romanian Stamps	4229-30
98 07 00	Romania	4150 + 850 l	Romania #2, 3	140th Anniversary of Romanian Stamps S/S	4231
98 10 08	Neth. Antilles	500c	Netherlands Antilles #61, 218	Hague Philatelic Exhibition S/S	856
98 10 08	Suriname	400,800 fl	Suriname #245, 174, 141	Hague Philatelic Exhibition	1151-3
98 10 08	Suriname	* 2400 fl	Suriname #245, 174, 141	Hague Philatelic Exhibition S/S	1154
98 00 00	Turkey	* 175,000 l	#2405,2442, 2654, C55 in margin	75th Anniversary, Turkish Republic	2715a
98 12 01	Grenada	* \$6	Canada #85	Christmas	2815
98 00 00	Salvador	* 1.00 ¢	SY – Pseudo Stamp	???	To come
98 10 09	Cyprus	* 30c	SY – Pseudo Stamp SUG	World Stamp Day	924
98 00 00	Pakistan	* 6r	Pakistan #20,21,22,23	50th Anniversary, Philately in Pakistan	902
98 11 04	Philippines	* 4 x 6r, 15r	SY – Pseudo Stamps	Philippine Postal Service Centennial, Blk 4, S/S	2555-6
98 11 05	Philippines	* 5 x 15p	Stamps of Revolutionary Govt.	Philippines '98, Philippine Centenary S/S	2561-5
98 09 04	Ireland	* 2£	Ireland #1143	Portugal '98 S/S	1145
98 10 09	Korea (South)	* 170w	SY – Pseudo Stamp	World stamp Day	1942
98 10 23	San Marino	* 800 l	SY – Pseudo stamp	Italia '98	1430
98 10 23	New Zealand	* 80c, \$1.50	New Zealand #74, 82	Italia '98 S/S	1520a
98 04 27	United States	* 32c	US #3137a, 3204a	Definitive Self -Adhesive, Bklt Pn 10(#3204-5)	3204a-5a
99 04 16	United States	* 33c	SY – Stamps on Envelope	Definitive Self-adhesive	To come
98 09 29	Brunei	* 30, 60, 90s	SY – Pseudo Stamp	5th Anniversary, Civil Service Day	535-7
98 10 20	Latvia	* 30s	Latvia #1, Others	80th Anniversary, Latvian Stamps	474
98 11 19	Andorra (Fr)	* 3.00f	SY – Pseudo Stamp	Inauguration of Postal Museum	502
98 00 00	Syria	* 10	SY – Stamp on Envelope	Arab Post Day	1418
98 00 00	Oman	* 100b	SY – Pseudo Stamp	World Stamp Day	409
98 10 08	Australia	* 45c	Envelope – Australia #11	50th Anniv. – Australasian Philatelic Traders	To come
98 10 09	Russia	1r	SY – Pseudo Stamp	World Stamp Day	6478
99 01 01	France	* 5 x 3fr Bklt	France Type A1	150th Anniversary, French Stamps	2693a
98 00 00	Yugoslavia	6d	SY – Pseudo Stamp	50th Anniv., The Philatelic Assoc. of Serbia	To come
98 10 09	Tanzania	* 150 – 500sh	SY – Stamps on Envelopes	World Stamp Day	1724-7
98 10 09	Indonesia	* 2 x 700 d	Indonesia #922,414	World stamp Day (Pair)	1791-2
98 12 15	Japan	* 8 x 50y	Japan #522,773,1708,2644	Greetings Stamps, MS of 8, 2 each	2655
98 00 00	Tuvalu	* 40c – \$1.50	Tuvalu # 722, 215, SY, 166	20th Anniversary, Independence (S/S #788a)	785-8
98 00 00	Algeria	* 5.00	SY – Pseudo Stamp	??	To come
98 00 00	France	* 5 x 3f	SY – Pseudo Stamp on Tab	Philexfrance '99	To come
98 10 09	Jordan	* 50-150f	SY – Pseudo Stamps	World Stamp Day	1609-11
98 00 00	Kazakhstan	* 30.00	SY – Pseudo Stamp	??	To come
98 00 00	Bolivia	* 2.00 Bs	A or SY ? Identify stamp	Anniversary, Bolivian Philatelic Federation	To come
98 09 19	Ukraine	* 10k	SY – Pseudo Stamp	Post Day	To come

## Classifieds featuring dealer-members

### TOPICAL FIRST DAY COVERS

Dozens of topics available, including Stamps on Stamps  
Send a SASE for photocopies of items in stock for your consideration

Les Rosen, 7724 Matchwood Lane  
Liverpool, NY 13090  
Email FDCsRFUN@aol.com

### LONGWOOD TOPICAL STAMPS

Our free, customized price lists are prepared upon receipt of your request, which means all items are in stock at the time of mailing. We stock over 100 topics and are totally committed to fair prices and 24 hours turn around on orders.

PO Box 915467, Longwood FL 32791  
Phone 407-788-0605 Fax 407-788-3534  
Email: billtopics@aol.com  
Http://www.topicalstamps.com

## SOSCU News

Welcome to new members: **Bruce R. Casarin**, 4410 Kingston Rd., Scarborough, Ontario M1E 5G2, Canada is a stamp dealer.

Auction #2 prepared by Joyce Storms is enclosed with this issue. The net auction proceeds are currently the only sources of income for SOSCU—other than the dues and donations of the membership. Please take a look at the material offered, participate in the bidding and consider submitting or donating auction material.

A Donation from **Martyn Yeo**, Hampshire, UK, is gratefully acknowledged

Please note that the editor has a new residence address and phone/fax number. My wife and I are looking forward to many satisfying years at this address.

New issues are occurring at a significant pace and **Judy Hornaday** is doing an excellent job of keeping your editor supplied with the actual material. The preliminary information we have is often sketchy, but we feel that informing you of the mere existence of a new SOS issue is a key objective. Anything which improves the accuracy of the checklist benefits all of us and corrections and notification of omissions are always welcome. Scott information on the stamps can lag by sev-

### TIMBRES THEMES

1221 Fleury E CP 35046  
Montreal QC, Canada H2C 3K4

If you are serious about building your stamp on stamp collection, contact us today. Our worldwide stock includes specialized items.

NEW ISSUE SERVICE  
TOPICAL APPROVALS  
WANT LISTS SERVICE  
VIRTUAL "ON LINE" APPROVALS

Free price list available on request. SOSCU members will be given a privilege 10% discount on all purchases. MasterCard and Visa accepted. Our personalized service will bring your guaranteed satisfaction. Write, call or email us today.

Tel/Fax 514-388-0157  
Email: janiced@topicstamps.com  
Web site <<http://www.topicstamps.com>>  
Members: CSDA, ASDA, APS, ATA and others

eral months or even as long as two years, depending on whether or not the issuing countries are cooperating with Scott by sending timely notifications. Some of the stamps can take up to a year to reach the stamp trade, so everything is not being done at the speed of light.

Our next issue will contain an update prepared by **Gaston Barrette** on SOS postal stationery. He has made great progress in his research and has uncovered some truly interesting items.

**Linns's Stamp News**, May 17, 1999, reports the following: The United States Postal Service will issue on June 5, 1999 in Springfield, Illinois a 33¢ blue Lincoln envelope which will draw heavily on historical elements, but it won't be embossed. The SOS Type B design is a hybrid of the 4¢ brown Lincoln embossed envelope of 1899 and the 5¢ blue Lincoln embossed envelope of 1903. The designer says that the 33¢ Lincoln envelope "is going to look better than embossed." It will be offset printed and the illusion of high relief of Lincoln's bust is created by printing certain shaded areas in black. Thus, what has been called the blue Lincoln envelope will actually be the black-and-blue Lincoln envelope.



# Philatelic Echoes of Empire: Mutiny on the Bounty

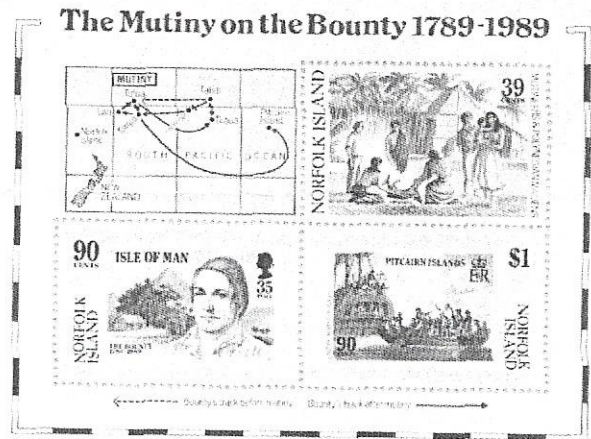
By Richard B. Howard

1989 saw the joint issue by three small islands, widely separated by thousands of miles of ocean, commemorating an infamous incident in the history of the Royal Navy, subsequently romanticized in literature and by a succession of epic movies as 'The Mutiny on the Bounty'.

The islands linked so disparately in their common history by this one event were the Isle of Man, lying in the Irish sea, an autonomous territory of the United Kingdom though politically separate as a crown dependency; Norfolk Island in the Southwest Pacific, enjoying a similar relationship with Australia; and Pitcairn Island, lying in the vast wastes of the Southeast between Tahiti and Easter Island, one of Britain's dozen remaining crown colonies, though administered from New Zealand.

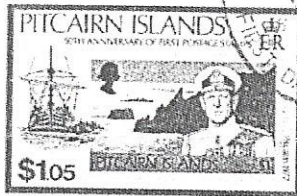
All three islands issued separate commemorative set for the 200<sup>th</sup> anniversary of the Mutiny, together with souvenir sheets in identical format of three stamps and one label, one value of the island's set

seamanship Bligh successfully navigated the vessel to Java in under fifty days from where they were repatriated to England.



Above: Norfolk Island #456 issued 4/28/89 showing Isle of Man #393 and Pitcairn Island #321d.

Official First Day Cover



From top left: Scott #338-42 issued 10/15/90 showing Pitcairn Islands #2, 31, 108, 172, and 300 plus GB #1

Mr RB Howard  
209 Balmoral Drive  
Southport U K.



and one each from the other two islands in a 'stamp on stamp' design, with the label featuring a map of the Pacific showing the Voyage of the Bounty from Tahiti to Pitcairn following the putting to sea of Captain William Bligh and his loyal crew members in an open boat in which by a magnificent feat of

Norfolk Island's place in the history of the incident is as the destination chosen by a number of the descendants of the mutineers on Pitcairn to migrate to when the little more than one square mile of Pitcairn became overcrowded, though many of these

(Continued on page 9)



## SOS Displays in Libraries: A Labor of Love

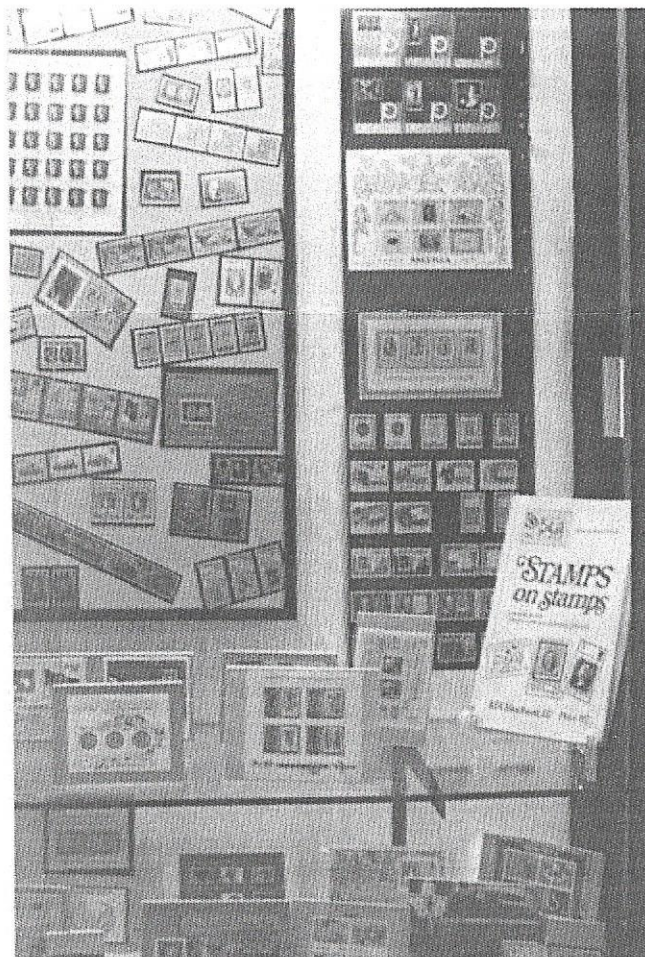
By Richard L. McClure

A personal thing I would like to share with the members of SOSCU is that I have one of the best jobs available. I work for the 49-99 Cooperative Library System. We serve public, academic and special libraries in six central California counties. I have the pleasure of delivering library materials to fifteen different libraries. Over the years of collecting stamps and visiting various libraries I came up with an idea. I developed a traveling display of stamps for use in libraries. The theme is, of course, stamps on stamps.

During the past two years I have displayed my stamp on stamp exhibit in the Amador County Library, Calaveras County Libraries, several branches of the Stockton-San Joaquin County Library and the Lodi Public Library. I have received numerous positive comments on the display and intend on continuing the practice in other libraries.

I use many modes of display such as poster boards, Vario sheets and acrylic photo frames. When mounting the stamps in the photo frames I use a bright contrasting backing to highlight the stamps.

I began collecting stamps in 1981 after retiring from the US Air Force and now have fourteen different collections including the SOS. I specialize in Liberia, but I also collect Spain, Greece, Ryuku Islands, Japan, Canada, Israel, New Zealand, Monaco and other specialized collection of cancellations and odd-shaped stamps. Needless to say, I stay quite busy with stamps. (*Author Richard McClure resides in Stockton, California.*)



## Mutiny on the Bounty

By Richard B. Howard

(continued from page 8)

chose to return to their original home in later years.

Prior to 1940 Pitcairn used New Zealand stamps as did Man and Norfolk use those of the UK and Australia, but subsequently Pitcairn has issued many stamps, most referring to the Mutiny, as Norfolk has also commemorated its own links with Pitcairn, and a topical collection of these issues, limited in number by modestly priced, could form a fascinating pictorial history of a famous incident in maritime history.

The Isle of Man's connection is as homeland, together with Cumbria, England's mountainous Lake

District, where the island and the mainland are separated by a thirty mile channel, of the Christian family, of who Fletcher, leader of the mutineers was born in Cockermonth in the mid 18<sup>th</sup> century.

*Author Richard B. Howard is a seasoned and sophisticated SOS collector with a keen interest in fascinating covers from remote places. His cover collecting methods were described in the April 1999 issue. He resides in Southport, UK. This is his first in a series of articles under the "Philatelic Echoes of Empire" banner.*



# Prices from Auction #1

By Joyce Storms

Lot #	Price	Lot #	Price	Lot #	Price	Lot #	Price
D1	5.00	73	6.00	183	2.00	270	3.00
D3	1.50	78	3.50	192	1.75	271	4.20
D5	4.00	79	8.00	196	.70	273	1.00
D6	10.00	81	12.00	200	3.50	274	5.00
D8	2.00	87	3.50	202	3.50	288	3.75
D9	3.00	88	8.00	204	1.25	295	1.00
D12	5.00	99	22.55	205	.65	296	1.00
D13	5.05	103	2.50	206	2.50	297	1.00
D14	6.00	113	2.25	208	.70	299	.90
D15	3.00	114	21.00	210	2.50	306	.75
D19	3.50	116	5.00	224	2.00	308	1.00
D21	3.65	117	2.50	228	.75	309	2.50
D24	4.00	118	.75	229	.40	310	2.00
D27	4.00	124	.75	234	.75	311	1.00
D28	3.00	128	.75	239	2.00	324	.50
D33	5.00	132	.75	240	1.50	325	1.25
D34	.50	136	.75	241	.60	333	2.00
37	6.00	140	1.50	247	1.50	336	1.00
43	4.50	141	1.25	249	.40	337	1.00
47	3.00	142	13.00	253	.70	344	1.75
52	6.00	159	1.00	254	2.00	353	13.05
55	2.50	163	.40	258	1.60	354	1.00
57	20.00	171	.45	260	.40	355	.80
70	5.00	172	11.5	261	.35	Total	355.20
71	3.00	176	2.00	264	.90	98	Lots

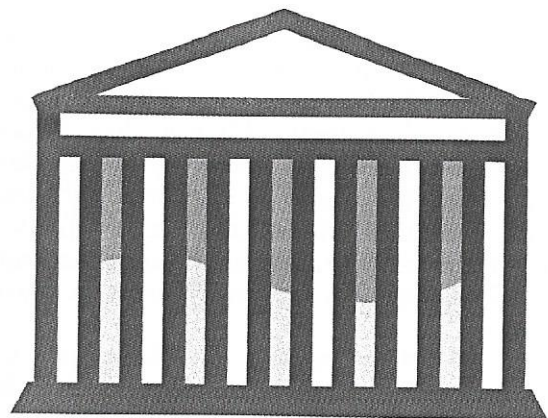
# Treasurer's Report

By Bill Critzer

In May 1997 I became Secretary – Treasurer and the custodian of SOSCU funds. There has been a lot of activity since, but the one piece of information no one has requested is how much money is in the bank. Someone undoubtedly wants to know, but has been too shy to ask, so here are the financial details through March 31, 1999.

## Income and Expense May 17, 1997 to March 31, 1999

Lifetime Membership	\$125.00
Dues and Donations	1,161.15
Auction Proceeds	355.20
Publications	96.00
Interest	6.83
<b>Total Income</b>	<b>\$1,744.18</b>
Editorial Expense	\$224.57
Printing of <i>SOS Signal</i>	477.10
Postage	461.58
Master Checklist Update 1992-1997	364.87
Website Expenses	180.00
Auction Expenses	322.50
<b>Total Expense</b>	<b>\$2,030.62</b>
Net Cash Flow	\$(286.44)
Beginning Bank Balance	1,586.26
Bank Balance 3/31/99	<b>\$1,299.82</b>





# About Our Name

By Wesley Shellen, President

Hello. For the past several months your current and former officers have been discussing a proposal to change the name of our unit to "Stamps on Stamps Collectors Club." I am writing to explain some of the reasons why we think this is a good idea.

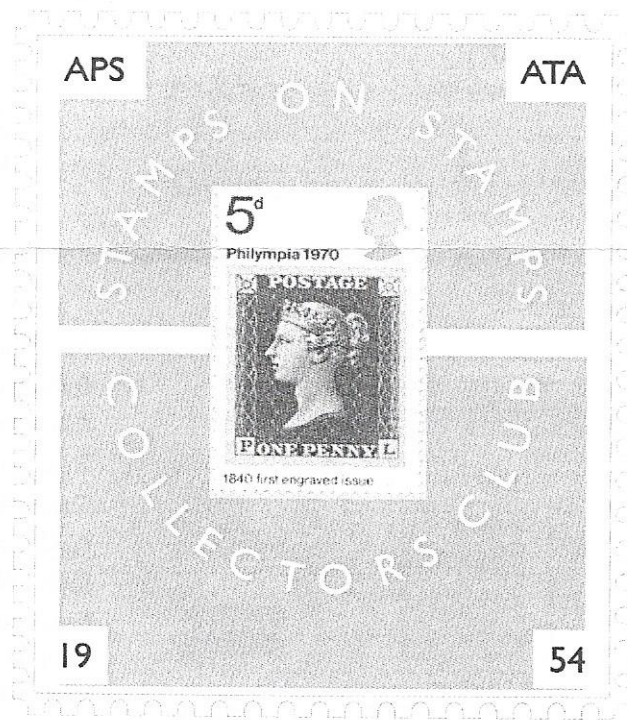
Surprisingly, the word "Unit" in our name is a problem. We are proud of our affiliations with the ATA and APS and intend to maintain them. But the word "Unit" implies to some prospective members, especially in countries outside the U.S.A., that they have to join the ATA or APS before they can join our club (which is not true). Our new web site on the Internet has a worldwide audience and we are hoping the new name will free us of such misunderstandings and attract even more new members.

I also want to make it clear that stamp centennials are still an important part of our topical scope, even though "Centenary" does not appear in the proposed new name. In the 1940's and 1950's when our club was formed, stamp centennaries were in their

heyday. As we approach the new millennium, stamp centennaries are rare and we have entered the era of 150th anniversaries. I suppose we could stay current by calling ourselves the "Stamps on Stamps/Sesquicentennial Club", but that would be more than a mouthful for most of us. Stamp centennaries are so obviously a respected classical specialty within the Stamps on Stamps topic that it is redundant to include "Centenary" in our club name anyway. Imagine if other clubs had such unwieldy names as "Trains on Stamps/Locomotive Unit," or "Cats on Stamps/Kittens Unit," etc. I think examples such as these show why "Stamps on Stamps Collectors Club" is a clear and straightforward improvement over our current name.

I told the other officers that I would take the heat if the rest of you don't agree with the new name. You can reach me by regular mail at 1650 Sunflower Drive, Missoula, MT 59802 or by e-mail (wesndeb@aol.com). I'd like to hear from you.

*Wes Shellen*





**STAMPS ON STAMPS - CENTENARY UNIT**

William E. Critzer  
 Secretary-Treasurer and Editor  
 1360 Trinity Drive  
 Menlo Park, CA 94025

Phone/Fax: 650-234-1136  
 Email: willcrit@aol.com



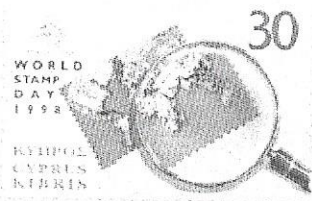
<http://ourworld.comuserve.com/homepages/soscu>

The SOSCU was founded in 1954. It is a non-profit philatelic organization serving a worldwide membership and is open to persons interested in stamp on stamp designs, stamp anniversaries and related topics. Dues are \$8 per year for members residing in North America and \$11 elsewhere. Officers serve without compensation and are reimbursed only for expenses incurred on behalf of the unit. You are cordially invited to join with us.

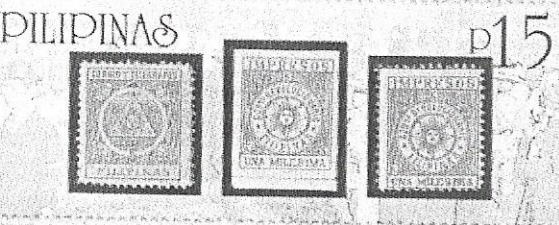
**Officers and Editors**

President	Wesley Shellen	Missoula, MT
Vice President	Joyce Storms	Branchville, NJ
Secretary-Treasurer and SOS Signal Editor	Bill Critzer	Menlo Park CA
Webmaster	Russell Skavaril	Columbus, OH
New Issues	Judy Hornaday	Mission Viejo, CA

**New Issues** (continued from page 6)



**PILIPINAS '98** PHILIPPINE CENTENNIAL INVITATIONAL INTERNATIONAL PHILATELIC EXHIBITION COMMEMORATING 100 YEARS OF PHILIPPINE INDEPENDENCE & 100 YEARS OF PHILIPPINE POSTAL SERVICE November 5-9, 1998 SM MEGAMALL, Mandaluyong City, Metro Manila



- Top row from left:
- Cyprus #924 (SUG)
- France # 2693a ( France #1)
- El Salvador # To come
- Tuvalu # 788 (Tuvalu #215)
- Middle row from left:
- Bolivia # To come
- Kazakhstan # To come
- Latvia # 474 (Latvia #1)
- Jordan # 1611
- At left: Philippines # 2564