

SOS Signal

Stamps On Stamps Collectors Club

**WES SHELLEN
1943—2004**

We have just received word that Wes Shellen, past-president of SOSCC from 1999 thru 2002, passed away at his home on July 8th.

We send our heartfelt condolences to his wife, Debbie and the family.

A tribute will appear in our next issue.

Please see his last letter to the Club on page 6.

Faroe Islands Europa 1979: Stamp On Stamp Essays And Issue By Lou Guadagno

In 1979, the theme for that year's Europa issues was postal and telecommunications history, and instead of a common design, each member issued designs related to their country. The Faroe Islands, as a self-governing part of member-nation Denmark, released its first Europa issue on May 7 (Sc # 43-44), reproducing two provisional stamps issued in early 1919. Up until a few years ago, it was accepted that the designs were chosen solely to meet the need of the Europa theme, and the fact that 1979 was the 60th anniversary year of the 1919 issue was considered only coincidental. Since then, various essays have come to light, which show that the Faroe postal authorities originally intended a more intensive anniversary program, and that the Europa designs evolved directly from that plan.

Both the anniversary essays and the accepted Europa designs were the work of the Danish artist, Holger Philipsen, who also designed the two stamp on stamp souvenir sheets issued in 1975 to publicize the then upcoming HAFNIA '76 Exhibition (Sc #565, 585).

Mr. Philipsen died in 1993 and various philatelic items he created were later sold by his estate.

The material relating to the Europa issue consists of three imperforate trial color essay proofs with imprinted perfs, and a perforated block of four se tenant essay proofs; they show that the work on the designs had advanced well beyond the initial stage, and that colors and formats were offered for consideration.

It was reported that only two sheets of 25(5 x 5) of each of the imperfs, and an unknown, but larger quantity of the perfed sheets were offered. My imperf singles are all from the lower left sheet margin, and my block is from the left margin. I have since seen an auction catalog photo of the right margin block, so the sheet has at least two horizontal blocks in a row.

All together the seven essays show a very complete collection of the provisional issues, but before I describe them, I would like to give a brief history of the originals. In late 1918, the postal authorities in Denmark, bowing

(Continued on page 2)

Inside This Issue

Faroe Islands Europa 1979: SOS Essays and Stamps	14
SOSCC News	5
Editor's Message	5
SOSCC Mail	6, 9
Classifieds	5, 6
New Issues	7-10

The essays and the issued stamps



Faroe Islands Europa 1979: Stamp On Stamp Essays And Issue

By Lou Guadagno

(Continued from page 1)



to war caused inflation woes, had decreed an increase in postal rates for the Faroes. Local letter and printed matter mail to Denmark rates increased on January 1st from 5 öre to 7 öre, but the supply of new 7 öre stamps was delayed in shipping, and supplies of 2 öre stamps were quickly depleted. As a stop gap, the acting postmaster of Thorshavn, Godskesen Andersen was instructed to create provisional 2 öre stamps by bisecting unneeded 4 öre stocks, but these proved inadequate within days. On January 11th, permission was then wired to revalue excess 5 öre stamps with a 2 öre surcharge. He took several 5 öre stamps and with pen and ink tried various ways to design the revalue.

He then approached the local newspaper to do the actual printing, but they did not have the right equipment or sufficient type face to make up the necessary plate. However, they did supply type characters so that the overprints could be applied by hand. A local carpenter mounted the type on a handle made from a cut down chair leg, and the postmaster and his assistant spent the rest of the day overprinting 15,500 stamps! These went on sale January 14th, and on the 23rd, the delayed stamp shipment finally arrived to replace the

provisionals.

Andersen mounted three of his hand drawn revalued stamps on a strip of paper as a souvenir of his project, and this, along with the "chair leg" hand-stamp and a full sheet of 100 provisional stamps are featured exhibits in the Faroese section of the Danish Postal and Telegraph Museum.

Since the stamps served a real need, the post office carefully allotted them for actual mail, and collectors were not allowed to purchase any quantity, nor were any set aside for sale to dealers. As a result, only small quantities of the mint stamps, and one full sheet reached the philatelic market before they were withdrawn from sale, creating a modern rarity. The postmaster was interviewed years later, and commented that he remembered being interrupted while surcharging a sheet, and that, when he picked up the hand-stamp again, it was upside down and he had accidentally created an invert error. He had not removed it from the sheet at that time, explaining that he expected to withhold it from sale when the sheet was torn down for use. The error was forgotten in the hectic rush to process the held up mails when they opened for business the next day, and over the rest of the brief period of sale. When he

(Continued on page 3)



At left above and bottom right: the Philipsen essays proofs as issued. Above: Photo of original Andersen manuscript essays. I and II are reproduced on 100 and 140 öre essays.



Faroe Islands Europa 1979: Stamp On Stamp Essays And Issue

By Lou Guadagno

(Continued from page 2)

thought to look for it, it was not among the remaining stocks, so he told the interviewer that the stamp could still exist somewhere, still undiscovered. By one of those amazing strokes of good luck that only happen in stamp collecting, the error stamp turned up to be on the only other complete sheet in existence. The anonymous buyer kept it in secret for over forty years, and not until it was purchased in 1962 by an American dealer, did it come to light. As Andersen had said, the first stamp in the third row of the sheet (# 21) had an inverted overprint! The sheet changed hands several times over the next twenty year, going to Denmark and then back to the U.S. in 1985; according to Donna O'Keefe in Linn's *Philatelic Gems 3*, it sold for \$147,000.

Although both the bisect and the revalue were only authorized for and used in the Faroes, the two are separated in the major catalogs; the bisect is listed in Scott as Denmark # 88a and the revalue as Faroe Islands # 1. Covers with the bisected stamp sell for several hundreds of dollars; when used to complete more unusual rates, the prices are even higher. The revalued stamp is much rarer mint and catalogs \$1,200 hinged, and never hinged examples could sell for double that: stamps on piece and covers sell for prices similar to the bisect. Covers with both provisionals used for correct rates could sell for around \$1,000.

Philipson clearly created his original designs to commemorate the anniversary of the issue of the

two provisionals; his 180 öre imperf color proof with imprinted perfs has the inscription 1919-1979 below the reproduction of the handstamped revalue. It was adapted for the Europa issue with a change in background color, inscription and typeface. The other two imperf with values of 100 and 140 öre reproduce two of the Andersen hand drawn revalues without the year dates, but with the inscriptions ESSAY I 1919 and ESSAY II 1919 added. These two then, are essays of essays! ESSAY III was not considered for reproduction, as it was almost identical to ESSAY I. His se tenant block of four 160 öre essays reproduced the four possible ways the 5 öre stamp could be bisected, and are inscribed PROVISORE 1: 3. 1. 1919. A very faint pale yellow underprinting simulates the multiple crosses watermark found on Danish stamps produced since late 1913. The upper right hand essay was adapted for the Europa issue with a change in shape, value and inscriptions, as well as a strengthening of the colors of the background.

Obviously, the Faroe postal authorities liked Philipson's designs, but probably felt that seven stamps were just too many, most of their commemorative sets issued up to then were usually no more than four stamps. It is also very likely that the Europa commemoration was a very late addition to their schedule, since they had never co-issued such stamps with Denmark previously. It made sense therefore, not to have two issues with a postal history theme, and to use some of the anniversary designs for the Europa issue.

The stamp on stamp, value and country name portions of the two approved designs were then engraved by famed artisan, Czeslaw Slania; printing was done by the Finnish National Bank note printers of Helsinki in a combination of steelprint (recessed engraving) and three color offset lithography. They were produced in compact sheetlets of twenty (4 x 5) with EUROPA imprints in the side margins; they were quickly sought by collectors of the Faroes, Europa and stamp on stamp topics. The small size of the sheetlets easily fit onto most album pages, but another reason for interest was the discovery and reports in the philatelic press that the offset background of the watermark crosses created twenty different stamps, so fanatical collectors (like myself) needed the full sheetlets to be "complete". The positions of the crosses change slightly in each row so it is possible to plate the stamps used on covers by comparing them to the sheetlets. A total of 100,000 sheetlets in each value were produced, and there was some speculation in them; according to an article in the Jan-Mar 1980 *Signal*, prices had gone as high as \$70 a pair. Current prices are more reasonable today, but the sheetlets are not commonly offered.

Essays of stamp on stamp designs are seldom available in the modern market, so we rarely have an opportunity to see what goes on before the stamps appear in the post office and the new issue reports. I was very happy to add these to my collection, and hope you also find them, and their story, interesting.

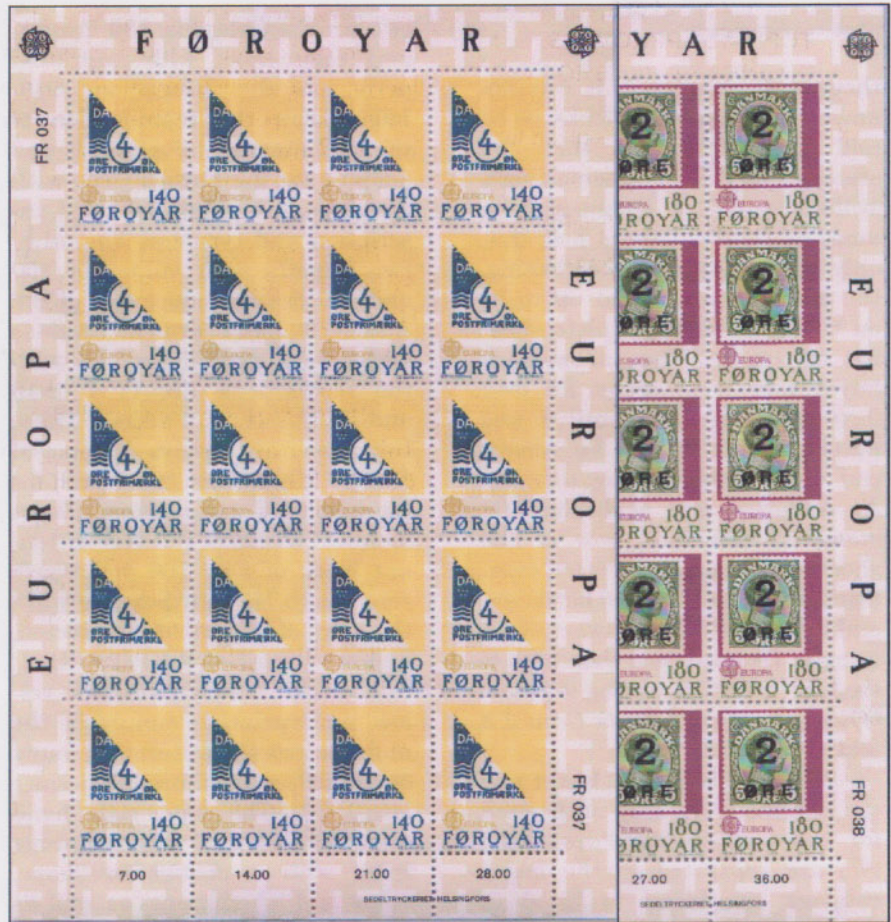
(Continued on page 4)

Faroe Islands Europa 1979: Stamp On Stamp Essays And Issue

By Lou Guadagno

(Continued from page 3)

In addition to the essays, I was also able to acquire a first day cover of the Europa stamps, autographed by Holger Philipsen. I have a large collection of designer signed covers, and this is the first I had ever seen with his signature. To complete my Faroes collection, I added a matching cover with the well-known "Slania" autograph. Of interest on these official covers, is that the cachet is a photograph of the chair leg handstamp used in 1919.



Above:
The two mini-sheetlets of twenty values with the backgrounds enhanced to show moving positions of the "watermarks".

Left:
Official first day cover, autographed by designer, Holger Philipsen. Note the cachet of the "chairleg" handstamp.

TIMBRES THEMES (Topical Stamps)

55 Greve Fatima CP 969, Trois-
Pistoles, Québec Canada G0L 4K0,

**WANT LISTS,
TOPICAL APPROVALS,
INTERNET STAMP SHOP**

A 10% discount will be given to
SOSCC members

MasterCard, Visa, PayPal

Tel: 418-857-2268

Email:

janiced@topicstamps.com

Internet:

<http://www.topicstamps.com>

Bill:

Good Luck!

Good Health!

Good Collecting!

Thanks Again!

From All of Us in SOSCC

SOSCC News

By Alf Jordan, Secretary-Treasurer

Many thanks to all who have renewed their membership. We continue on a sound financial footing. I have not prepared a formal financial report for this issue, but numbers are available on request.

Greetings and a warm welcome to all our new members who joined the SOSCC over the past year: **Michael Adams**, Tucson, Arizona, **Gary Bywater**, Midvale, Utah, **David Pyle**, Portland, Oregon, **Joseph Reibold**, Cedarburg, Wisconsin, **Robert Stewart**, Copell, Texas, **John Wynns**, Tucson, Arizona, and **Plinio Richelmi**, Pavia, Italy—Professor Richelmi is working on a catalogue of SOS issues, and was most interested in obtaining our checklist.

Check out his web site in progress at: <http://utenti.lycos.it/richmelmiplinio/index.html>

And a fond farewell to all of those who have left us. Particular regards go to Bill Critzer for all he has done for the Club. He was instrumental in getting me involved, and I will be forever in his debt!

N. Y. CLUB MEETING!!

There has been some interest in an informal gathering in conjunction with the Mega Event show in New York City. At this point, we have tentative plans for a luncheon and meeting on Saturday, October 16th. Please let me know if you are interested in attending, and I will look into some space at the Yale Club, where we will be dining.

Editor's Message

By Lou Guadagno

First off, I would like to say hello to all the members of the Club and assure them that I will do my best to continue the Signal, hopefully as well as my predecessor.

I'd also like to thank Bill Critzer for the fantastic job he has done for the Club over the last seven years. Without a doubt, the SOS Signal was the "glue" that held our Club together over that time. It is not an easy job to put together a periodical, issue after issue, and you may not know this, but Bill did it for two other clubs at the same time!

Bill gave me a very gracious introduction in the last issue; I

don't think I am anything close to those titles, but I do lay claim to still being enthusiastic about SOS, even after 35 years of collecting. I hope this will show in the issues to follow.

I hope that past contributors will continue to submit articles, and I ask that those who didn't to consider writing. Even a paragraph or two about a favorite stamp or cover, or a recent acquisition or discovery broadens the content of the Signal from the work of one or two people and makes it truly represent the Club. I would be very happy to work with any potential writer

and help them complete their contribution.

Please email me with whatever comments, suggestions or questions you might have regarding the Signal.

Lastly, I have one correction I'd like to make in my article, "A Mauritius Postcard..." in the January 2004 issue. In the second paragraph an extra Roman numeral typo got by me—George was the son and heir of King Edward VII.

SOSCC Mail From Members

A letter received 6/11 from past president Wes Shellen:

Dear Friends:

I regret to report that my health has deteriorated to the point that I need to start selling my stamp collection. My stamps on stamps, covers, etc., have been consigned to Harmer Schau Auctions Northwest, Inc., 7940 S.E. Division # A, Portland, OR 97286.

The sale will take place this coming autumn, contact them for further information:

Telephone: 503-788-3533

Email: rbeallstmp@aol.com.

STAMPS ON STAMPS AND STAMP ANNIVERSARIES TOPICAL COLLECTION:

A: Collection of stamps, souvenir sheets and covers in five binders (2/3) and two Lighthouse stock books, most are mint never hinged. Includes specialty collections of 1940 Penny Black Centenary and the 1947 U.S. Stamp

Centennial (CIPEX). Note better items: France 624, Germany 667-8, B309; B318-19; Greece 416-20; Japan 378a (\$160), Liberia 356a perf, imperf and "SPECIMEN" overprints (total \$150), and all of the Swiss souvenir sheets. (The last time I cataloged this collection was in 1993, and its catalog value then was \$ 3,700.)

B: Box with 400 plus Stamps on Stamps topical covers and cards, mostly philatelic FDCs worldwide. Most retail in the \$1 to \$5 range, but include better items for which I paid \$30 or more (see the first 8 covers in the box). I believe a conservative estimate of the retail value of these covers would be about \$ 2,000.

C: Two FDCs of Germany: 667-8, B309 and B318-19. Catalog value as used stamps is over \$ 160 (these could be sold separately or combined with the cover collection in B above).

Thanks,
Wes Shellen

An email from member, Manuel Lopez Roldan:

Hola,

Espero que este todo bien y recibe saludos desde Puebla, Mexico. Yo soy miembro del Club SOS, y quiero ponerme en contacto con algun otro miembro del Club, que viva en Mexico o en America Latina, o bien con alguno que hable español. Espero tus comentarios y hasta pronto.

Atentamente,
Manuel Lopez Roldan
email: hmanulope@yahoo.com.mx

If you can correspond with Manuel in Spanish, please get in touch with him.

Please see another letter on page 9.

Rare Faroe Island Imperforate Proofs: \$200.00 per set of 3

U.S. REPRESENTATIVE FOR DENMARK, FAROES, FINLAND, ALAND, GREENLAND, ICELAND AND NORWAY: BUY NEW ISSUES AT FACE— FDCs, YEAR SETS, OLDER ISSUES AVAILABLE

CONTACT:
NORDICA ATT: DAVID BEIN
P.O. BOX 284
OLD BETHPAGE, N.Y. 11804

Phone/Fax: 516-931-3485 or 800-441-3485
email: nordicaD@optonline.net



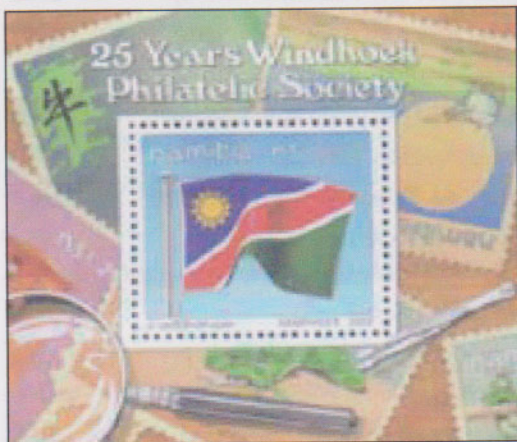
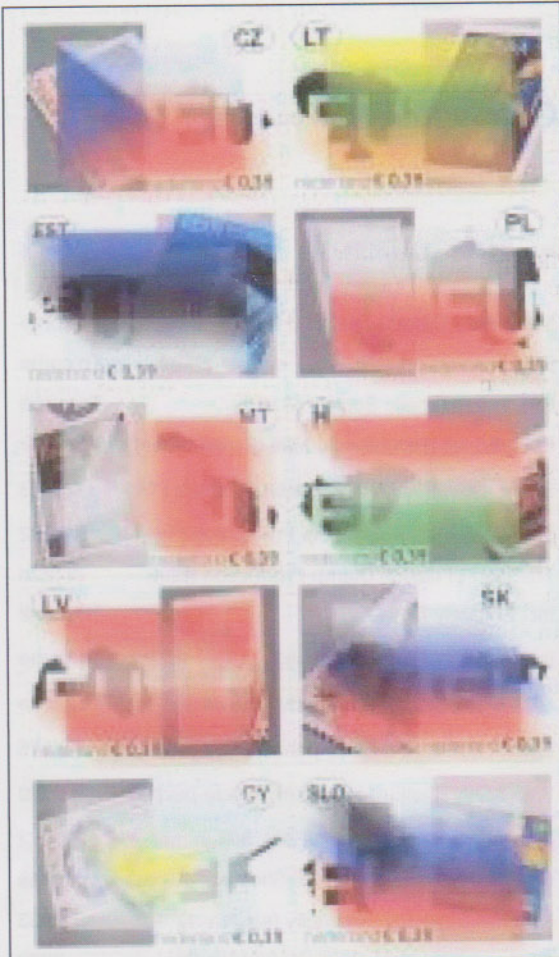
NORDICA

STAMPS FROM POST OFFICES AT FACE VALUE

New Issues By Lou Guadagno (new on list = *)

<u>Date</u>	<u>Country</u>	<u>Values</u>	<u>Stamp Reproduced</u>	<u>Reason for Issue</u>	<u>Scott #</u>
04 02 21	Argentina	* 2 x 75 c	Argentina # 127	* 50th Ann'y. Orcadas del Sud P.O. (s/s-1 sos)	To come
04 04 19	Belgium	* 2 x	Belgium 2004 issue tbi	European Union (s/s: 4 v-1 sos)	To come
04 03 27	Brunei	* 3 x 25 s	Brunei 1884 local, others tbi	National Philatelic Society (3 v)	To come
04 05 28	Canada	* 2 x 49 ¢	Canada # 9, 27	* Pioneers of Transatlantic Mail-(2 v se tenant)	To come
03 09 09	Croatia	2.30k	Croatia # tbi	Stamp Day; 50th Ann'y, Postal Museum (1 v)	533
04 01 20	Czech Rep.	6.50k	Czechoslovakia # 1703	Traditions of Czech Stamp Production (1v)	3192
04 01 20	Czech Rep.	8 x 6.50k	Czechoslovakia # 1703	Tradition of Czech Stamp Production (Bklt-	3192a
04 05 06	Ecuador	* 2 x \$.75	Ecuador # 2, Greece # 1, others tbi	Int'l Philately Day (2 v)	To come
04 05 06	Ecuador	* \$ 2.00	16 Classic world-wide issues	Int'l Philately Day (imperf s/s)	To come
04 06 02	France	* 2 x 3 x 0,50 €	France— 8 issues of 1944	60th Ann'y D Day (2 Bklt-3v + 4 sos on	To come
04 03 16	Gt. Britain	* £ 7.44	Gt. Britain # tbi	Letters By Night (Bklt-4 panes/1 sos in	BK175
03 10 28	Indonesia	1500r	Indonesia # 1031-2, 1246	75th Ann'y Oath of the Youth (+ tete-beche)	2050
03 09 03	Namibia	* N\$ 10	Namibia-fantasies of previous	25th Ann'y, Windhoek Phil Soc (s/s-in mar-	1022
04 05 10	Netherlands	* 10 x 0,39 €	10 from new Euro Union members	On The Way To One Europe (Sheetlet—10 sos)	To come
03 11 14	Philippines	22 \$P	Philippines # 1-2, 4-5 + on tab	Filipinas 2004 Exh. Publicity (s/s-No. 1)	2883
03 12 15	Philippines	22 \$P	Philippines # 1-2, 4-5 + on tab	Filipinas 2004 Exh. Publicity (s/s-No. 2)	2892
04 01 15	Philippines	22 \$P	Philippines # 1-2, 4-5 + on tab	Filipinas 2004 Exh. Publicity (s/s-No. 3)	2893
04 01 30	Philippines	22 \$P	Philippines # 1-2, 4-5 + on tab	Filipinas 2004 Exh. Publicity (s/s-No. 4)	2894
04 01 31	Philippines	22 \$P	Philippines # 1-2, 4-5 + on tab	Filipinas 2004 Exh. Publicity (s/s-No. 5)	2895
04 02 01	Philippines	22 \$P	Philippines # 1-2, 4-5 + on tab	Filipinas 2004 Exh. Publicity (s/s-No. 6)	2896
04 02 01	Philippines	4 x 6 \$P	Philippines # 1-2, 4-5	150th Ann'y. Stamps (4 v se tenant strip)	2891a-d
04 02 01	Philippines	22 \$P	Philippines # 1-2, 4-5 + in margin	150th Ann'y. Stamps (s/s)	2897
04 02 01	Philippines	8 x 6 \$P	Philippines # 1-2, 4-5	150th Ann'y. Stamps (s/s, 4v perf, 4 v imperf)	Unlisted
03 12 12	Portugal	€ 1.00	Portugal #2, partial + in margin	150th Ann'y. Stamps (s/s)	2604
04 03 25	Romania	* 3 x 21,000 L	Greece # 125	50th Ann'y Rom Olympic Comm (s/s 3v-	To come
04 04 24	Romania	* 16,000 L	Romania-Moldavia # 1(in margin)	51st Gen'l Assembly, Wildlife Conservation	To come
03 10 20	Saudi Arabia	1 r	Saudi Arabia--Hejaz-Nejd # 129	75th Ann'y First Commem Stamp (1 v)	1340
03 09 01	Serbia-Mont.	1 d	Serbia-Mont # 189b	Definitives—Postal Services (4 v-1 sos)	196
03 10 24	Serbia-Mont.	0,25 €	Various WWF, others on catalogs	Stamp Day (1 v)	212
03 07 01	Spain	0,76 €	Chile # 1	150th Ann'y, First Stamps of Chile	3227
03 06 03	Surinam	1700 sf	Surinam # 7	300th Ann'y, J. Enschede Printers(4 v-1394-	1396
03 03 31	Wallis, Futuna	* 5-40 fr	W&F#C182,C195,498,513,522,514	Postal Art (Se-tenant 5v-4 sos)	573a-e

More New Issues By Lou Guadagno



Clockwise:
Argentina,
Ecuador,
Wallis and Futuna,
Namibia (in margin),
Netherlands (edited)



SOSCC Mail Continued

A letter from Michael Mahler:

About thirty years ago, I collected SOS issues in a non-traditional way—used on commercial covers. Recently I came across a group of material accumulated back in those days. Having long since moved on to another collecting area in which I am deeply engrossed, I don't think I'll ever return to the SOS pursuit. I'd like to give some SOS collectors the chance to acquire them. Here is a partial listing:

1. Vatican City 1952-- 50 lire S/S pair (stamps + top portion of S/S margin—flown cover to USA. Almost impossible to find on non-FDC!

2. Umn al Qiwain—50np depicting Belgium 1849 10c-- on flown 1968 cover to USA.
3. Ajman London Centenary Exh'n set of eight depicting classic issues--on two 1965 registered covers addressed to Ernesto Fink in Mexico City (deceased long-time member of SOSCC).
4. Chad 1971—100fr depicting Saxony 1850 3 pf-- on registered cover.
5. Salvador 1940--Penny Black Centenary set—8c +15, 30c airs—on 1940 cover.
6. Monaco 1948—Stamp Day 6fr+4fr (Type B) x 4—on registered cover.
7. 14 nice but lesser covers.

Cordially,
 Michael Mahler
 2721 2nd Street # 211
 Santa Monica CA 90405
 Email: mikemahl@att.net

Please contact him for further information if you have any interest in this material.

More New Issues By Lou Guadagno

Gt Britain (in margin),
 Indonesia (tete-beche),
 Romania (in margin)

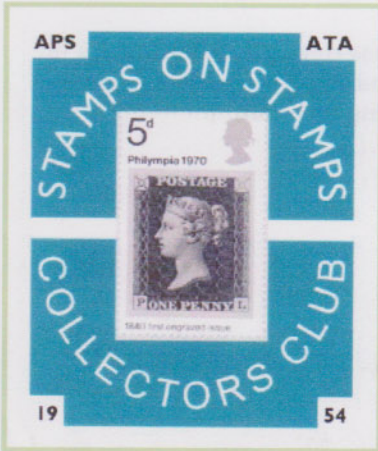
SOSCC was founded in 1954. It is a non-profit philatelic organization serving a worldwide membership and is open to persons interested in stamp on stamp designs, stamp anniversaries and related topics. Dues are \$11 per year for members residing in North America and \$14 elsewhere.

Officers serve without compensation and are reimbursed only for expenses incurred on behalf of the Club. You are cordially invited to associate with us. Please contact the Secretary Treasurer or use our website for more information and to become a member.

Stamps On Stamps Collectors Club

Lou Guadagno, Editor
 1772 East 51st Street
 Brooklyn, New York 11234
 USA

Email: soserlou@optonline.net



President	Gaston Barrette	403-2765 Chemin Sainte-Foy Sainte-Foy, Quebec G1V 4S4 Canada
Vice President	Michael Merritt	73 Mountainside Road Mendham, NJ 07945
Secretary/ Treasurer	Alf Jordan	156 West Elm Street Yarmouth, ME 04096
Editor and New Issues	Lou Guadagno	1772 E. 51st Street Brooklyn, NY 11234

Email addresses may be found on the SOSCC website:
www.stampsonstamps.org

More New Issues

By Lou Guadagno



Clockwise from upper left:
 Canada, Brunei, Belgium, Romania (edited).