

SOS Signal

Stamps on Stamps Collectors Club

Postal Stationery: A Refresher

by Gaston Barrette

• Of tangible benefit:

• Enclosed for your collection is a complimentary mint copy of a new German vending machine stamp. This recent new issue has been donated by member Gert Aue of Hamburg, Germany. For this generous donation the editor gratefully thanks Gert on behalf of all the SOSCC member recipients.

Inside this issue:

Postal Stationery: A Refresher	2
A Philatelic Icon from Paradise	4
Hungarian Postcards	5
New Issues	6
New Officers/Dues Notice/ Treasurer's Report	7
Classifieds	7
More New Issues	8

The knowledge gained over the last four years in the research of SOS postal stationery in catalogues and other sources in order to build a list of such items for the SOSCC is, I think, a good excuse to present a more precise definition of this category and a better assessment of the degree of coverage that can reasonably be attained.

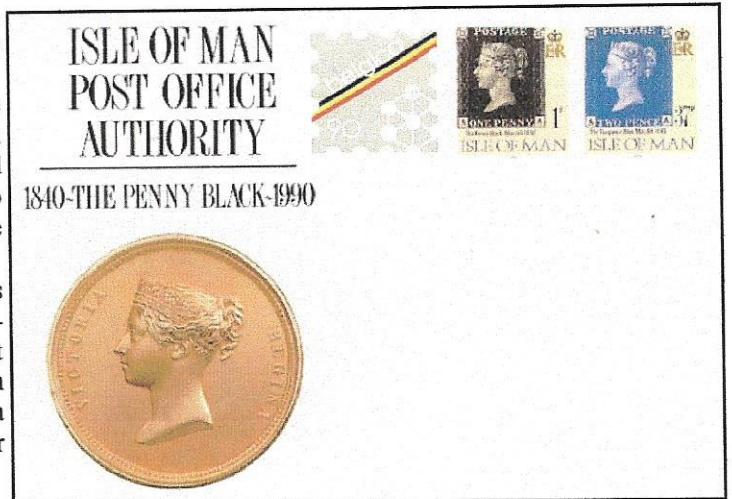
There are two ways to consider the question. The first is to concentrate on the imprinted stamp design (also called indicium) only. This approach gives three types:

1. A stamp on stamp where the reproduced stamp is a recognizable issued stamp; this type is akin to type A for stamps (Figure 1 at right).
2. A stamp whose design is based upon an earlier recognizable stamp, but modified or interwoven into a stamp or a copy of a stamp; this is type B for stamps (Figure 2).

3. A stamp on stamp where the reproduced stamp is a pseudo or stylized stamp; this is type SY for stamps (Figure 3).

As all catalogues describe and often illustrate the stamp design, the result is that the coverage of these items is almost complete. A big help as to the first type for the missing items on the SOSCC list came from the list compiled for many years by Lou Guadagno who deserves

(Continued on page 3)



New Officers by Wesley Shellen and Bill Critzer

The time has come to again hold the biannual election of SOSCC officers. The candidates for the coming two year term through the end of 2004 are shown to the right. As usual, we will use our adverse selection process. If you wish to vote for these candidate, you need do nothing. If you wish to cast a "no" vote for any one or all of these candi-

President: **Gaston Barrette**, Sainte-Foy, Quebec, Canada (now Vice President)

Vice President: **Michael Merritt**, Mendham, NJ (will continue as Webmaster)

Secretary/Treasurer: **Alf Jordan**, Yarmouth, ME (will continue as Production Manager)

(Continued on page 7)

Postal Stationery: A Refresher

by Gaston Barrette

“A stamp whose design is based upon an earlier recognizable stamp, but modified or interwoven into a stamp or a copy of a stamp; this is type B for stamps”

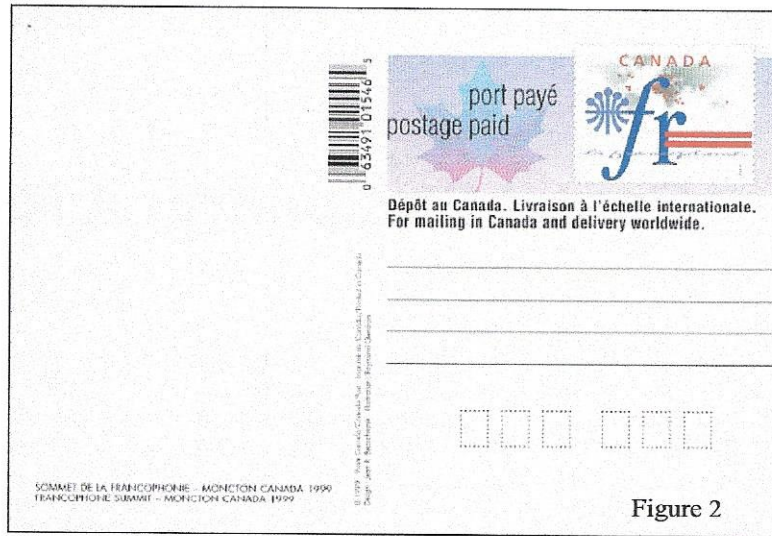


Figure 2

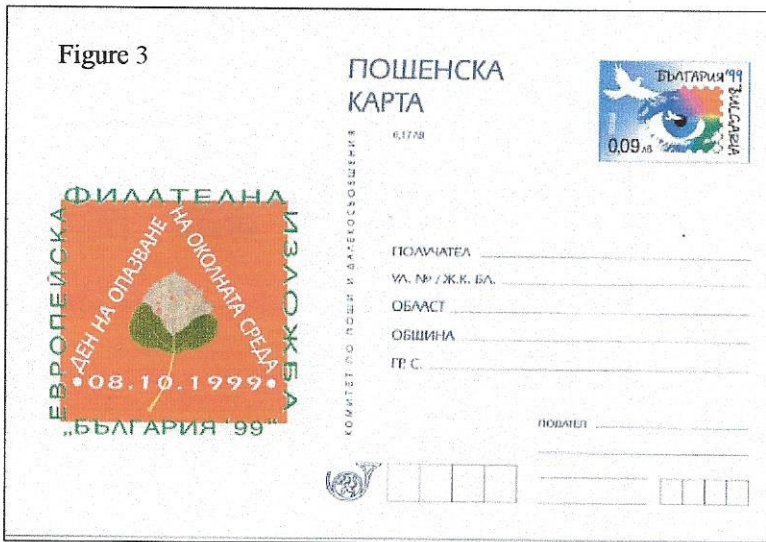


Figure 3

“A stamp on stamp where the reproduced stamp is a pseudo or stylized stamp; this is type SY for stamps.”

“The second approach is to consider the item of postal stationery in its entirety, that is cachet and reverse (mainly in picture post cards, but sometimes on envelopes) and see what topic appears on it.”



Figure 5

Postal Stationery: A Refresher

by Gaston Barrette

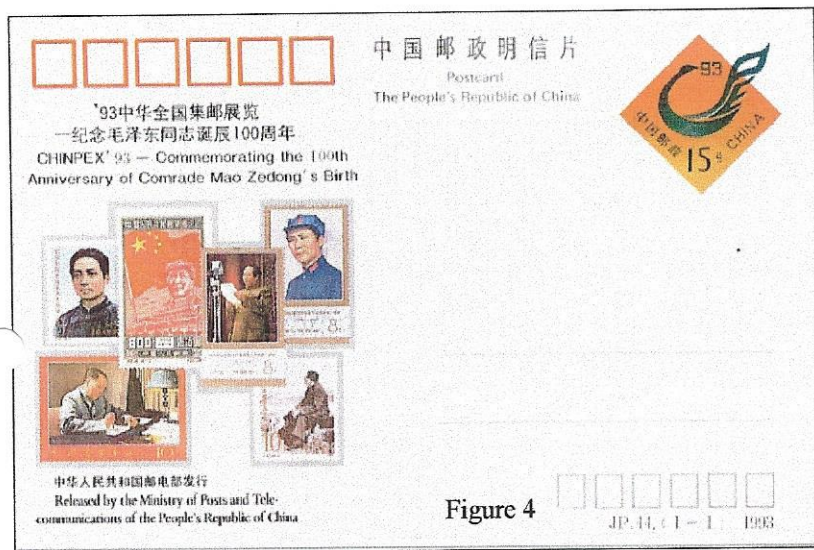


Figure 4

(Continued from page 1)

many thanks for his cooperation.

The second approach is to consider the item of postal stationery in its entirety, that is cachet and reverse (mainly in picture post cards, but sometimes on envelopes) and see what topic appears on it. It is certainly legitimate to take into account any stamp or semblance of a stamp on this space. Who is in a better position than SOSCC, essentially devoted to the topic of stamps on stamps, to extend that notion to postal stationery? Three types are also to be distinguished here.

1. A recognizable stamp (figure 4).
2. A pseudo or stylized stamp (figure 5).
3. The reproduction of the stamp design, usually on a larger scale and modified (figure 6).

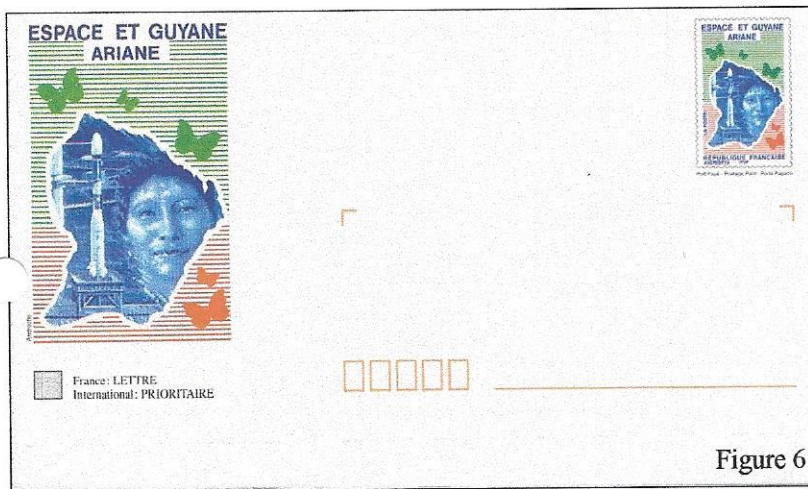


Figure 6

Editor's note: Gaston Barrette has been responsible for the development of the postal stationery checklist for SOSCC. Until he became interested in this particular aspect of our topic, the listing of this material was skimpy. When I first converted the 1992 checklist into an electronic format, there were, as I recall, only 30 postal stationery items identified. Today there are close to 1,000 items listed.

This is the difficult part in terms of coverage since cachets are rarely described in catalogues for earlier years; however, much progress has been made and they are described on many modern issues. On the other hand, it is a well known fact that the cachet of early issues was generally blank or filled with printed messages. One has to wait until the late nineteen fifties when the stamp explosion occurred to witness the advent, though in a more modest way by postal stationery, of the fashion of cachets with illustrations. I am much indebted for this more arduous part to a European correspondent who, on a regular basis, sends clippings from German philatelic magazines and other useful material.

So, after the examination of many catalogues such as *Higgins & Gage World Postal Stationery Catalog* (from the beginning to the early 1960's), *Michel for Eastern and Western Europe* (from beginning to 2002), the *New Issue Report* issued by Classic Philatelics (since the middle of 1979) and many other minor sources of information, I estimate that the topic of stamps on postal stationery is so covered as to give a pretty good picture of its development through time.

In conclusion, the six types described in this article constitute the entire universe of stamps on stamps on postal stationery. It is the collector's decision to choose the type which appeals most to her or him.


A Philatelic Icon from Paradise


by Bill Critzer

The "Hawaiian Missionary" Stamps of 1851-1853




The first official Hawaiian post office was established in December 1850. Postmaster Henry M. Whitney had stamps printed locally in three denominations. Philatelists call these rare stamps "Hawaiian Missionaries" because virtually all were used by Christian missionaries on outbound mail. Only 28 covers with Missionary stamps are known to exist; only the Dawson cover (right) bears the 2¢ stamp. The two 13¢ stamps were unusual as they prepaid postage in two countries—Hawaii and the U.S.







"Hawaiian Missionary" stamp
1851
USA37



"Hawaiian Missionary" stamp
1851
USA37



"Hawaiian Missionary" stamp
1851
USA37



"H.I. & U.S.
Postage
1852
USA37

© 2001 USPS

The original Hawaiian postage values were 2¢ for newspapers and printed circulars, 5¢ for Hawaiian letter postage, and two stamps with 13¢ values. The 13¢ stamps paid for mail sent from Hawaii to the east coast of the United States, by combining the costs of the 5¢ Hawaiian rate, a 2¢ ship fee, and an additional 6¢ to pay U.S. postage for transcontinental delivery.

The 2¢ classic gem featured on the new stamps is the only known unused copy of the 2¢ value.

The 1852 cover featured in the pane is slightly singed along its left edge, having been rescued from a furnace stove in an abandoned tannery. It sold at auction in 1995 for about \$2 million.

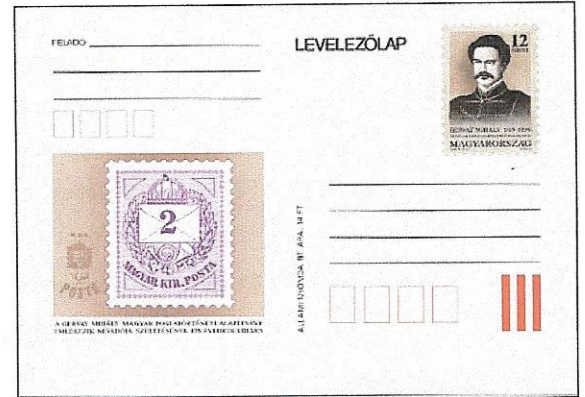
The pane was issued October 24, 2002 and is still available from USPS Stamp Fulfillment Services for \$1.48. Considering the gouging going on with new issues around the world, this is truly a bargain for the SOS collector. Congratulations, USPS!

Some Favorite Hungarian SOS Postcards by Bill Critzer

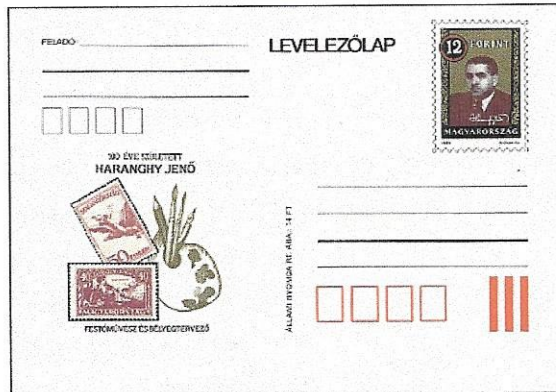
Issued 11/18/87 for the 40th anniversary of Filateliai Szemle, this 2ft card shows a boy and a stamp album and stylized stamps in the cachet.



Issued May 27, 1994 this 12ft card honoring Post Director M. Gervay shows Hungary #13 in the cachet.



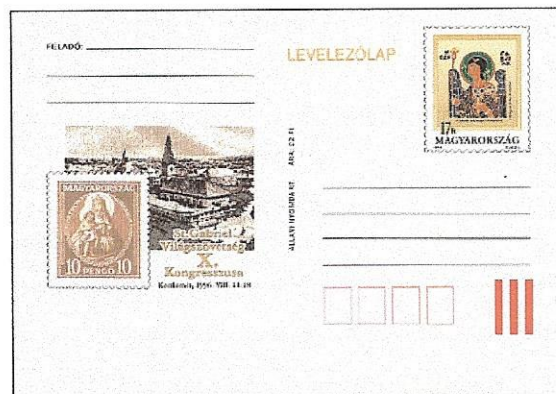
Issued August 1, 1994 this 12ft card honors Haranghy Jenő, Stamp Designer and shows Hungary #C18, B75.



This beautiful 12ft card issued 9/5/94 for Budapest '94 has Indonesia #359 in the indicium and Hungary #1539 in the cachet.



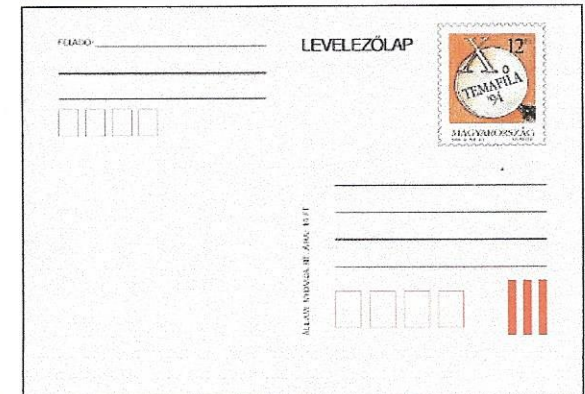
Issued August 15, 1996 for the Xth Congress, Intl. Fed. of St. Gabriel, this 17ft card shows Hungary #465 in the cachet.



Issued on September 11, 1992 for Eurofilex '92, this 10ft card features simulated perforations.



Issued May 6, 1994 for TEMAFILA '94, this 12ft card has on the back Hungary #1658, C128, 1237, C30, C303, 1196, 3253, 849, B128, 788.



New Issues by Lou Guadagno

(new on list = *)

Date	Country	Values	Stamp Reproduced	Reason for Issue	Scott #
✓ 02 04 26	Bulgaria	25, 65 st	Bulgaria #1909 modified; other tbi	Bulgarian Stamp Designers	4220-1
✓ 02 07 05	Canada	48c	Canada #77	Centenary, Postmasters and Assistants Assoc.	1956
✓ 02 02 15	Cuba	* 5c, 65c	Cuba #356, 357	4th Havana Festival, 35th ann. Cohiba cigars	4196, 99
✓ 01 10 00	Dominican Rep	5\$P	Dominican Republic #193	Stamp Day (this is also a SUG) <i>ds</i>	To come
✓ 02 06 23	Egypt	* 125pt	Egypt #318-21	50th Anniversary of the Revolution <i>AB22</i>	To come
✓ 02 08 30	Gambia	* 6x10d	Netherlands #1, B72, 279, 586, more	150th Anniv. Netherlands stamps, Sheetlet 6v <i>2660</i>	To come
✓ 02 04 04	Germany	€ 0.56	Germany #2144	Machine Vended Postage-example enclosed	To come
✓ 01 10 16	G.B.-Isle of	29-50p	GB #MH1, 300, Isle of Man #3, 8	HAFNIA 2001 (Overprint on 900)	To come
✓ 01 08 25	Hong Kong	1.80-3.10\$	HK #66, China #tbi, 893	160th Anniv., Hong Kong Post (Bkit pane 4v)	To come
✓ 02 04 26	Ireland	* 3xppd	Ireland #68 modified	PC—Anti-Reactor Campaign	To come
✓ 02 10 04	Italy	* € 0.41	Italy-Roman States #6	150th Anniv. Papal State <i># 2517</i>	To come
✓ 02 08 28	Kyrgyzstan	* 25-33.70s	Many Olympic game theme stamps	History of the Summer Olympic Games-4S/S	To come
✓ 02 08 08	Liechtenstein	90, 130fr	Liechtenstein #B9, 156 + 22 others	90th Anniv., Stamps of Liechtenstein (2v)	1237-8
✓ 01 05 14	Monaco	2.70fr	Monaco #1952	50th Anniv., Prince Rainier III <i># 2206</i>	To come
✓ 01 12 30	Mongolia	* 20v-300t	Monaco #738, US #704, others	History of Humanity (Sheetlet)	2504a-t
✓ 02 04 30	P New Guinea	???	PNG #tbi; BrNG #tbi	Centenary First Stamps of PNG (6v + S/S) <i>024-9</i>	To come
✓ 02 06 10	Romania	10,000L	Moldavia #4, 1, 2	50th Anniv., Int'l Dealers Assoc (S/S 4v-1sos)	To come
✓ 02 06 15	Romania	2 x 3,000L	Moldavia #1 modified, #10	50th Anniv., Int'l Dealers Assoc (2 envelopes)	To come
✓ 02 06 03	San Marino	4 x 1.24	SM #1, 7, 11, 15, 17	125th Anniv., Stamps of San Marino S/S (4v)	To come
✓ 02 04 13	Saudi Arabia	3r	SA #912, 1261, 1279 + many others	20 Years of Achievements-King Fahd S/S <i>1324</i>	To come
✓ 02 08 30	Surinam	* 1700,6800sf	Netherlands #244, 103	Amphilex 2002 <i>1282-4</i>	To come
✓ 02 08 30	Surinam	* 5900sf	Many Surinam stamps-as #1230	Amphilex 2002	To come
✓ 02 10 24	United States	* 4 x 37c	Hawaii #1,2,3,4, US #11	"Hawaiian Missionary" Sheetlet (see page 4)	To come
✓ 02 06 13	Vatican City	* €.41,.52,1.03	Roman States #11,25; Vat City #2	150th Anniv., First Stamps of Papal State (3v)	1221-3
✓ 02 09 26	Yugoslavia	* 30d	In margin: Serbia #115,14,26, others	JUHIZ XI Exhibition (S/S)	To come



Kyrgyzstan August 28, 2002



Egypt June 23, 2002



Romania June 10, 2002

Classifieds

TOPICAL FIRST DAY COVERS

Dozens of topics available including, of course,

STAMPS

ON

STAMPS.

Send a SASE for photocopies of items in stock for your consideration

LES ROSEN

7724 Matchwood Lane
Liverpool, NY 13090

Email: FDCsRFUN@aol.com

TIMBRES THEMES (Topical Stamps)

221 Fleury E CP 35046,
Montreal, Canada H2C 3K4

NEW ISSUES,
WANT LISTS,
TOPICAL APPROVALS

Free price list available

A 10% discount will be given to SOSCC members

MasterCard and Visa

Tel: 514-383-6248

Fax: 514-388-0157

Email: janiced@topicstamps.com

Internet:

<http://www.topicstamps.com>

SOSCC News by Bill Critzer

(Continued from page 1)

dates, send your "no" vote by December 28, 2002 to the SOSCC election monitor, retiring President Wesley Shellen, whose address is on page 8. Bill Critzer has chosen to relinquish his governance responsibilities as Secretary-Treasurer, but will continue as Editor of the *SOS Signal*.

This is a group of outstanding members who have accepted the challenge to continue to move the organization forward by serving as its governing officers. Please give them your full support during the next two years.

Dues—Dues—Dues

You will undoubtedly remember that this is the time to pay dues for the coming year. If your membership needs to be renewed, I have inserted on a separate piece of paper a clear indication of the amount due. If we don't hear from you by February 1st, we won't be able to send you the next issue of the *Signal*. Reminders to pay your dues will not be sent.

Dues are being increased to \$11 per year in North America and to \$14 per year if you are overseas. As you might imagine, the cost of producing and delivering the *Signal* keeps increasing, including postage, and the last dues increase was two years ago.

Please send your dues to Bill Critzer, Secretary-Treasurer at his address on page 8. Many of our members pay for two years at a time, which is convenient for both parties. Please make your check payable to SOSCC, US currency is also accepted, as well as mint US stamps having a face value of 15 cents each or greater.

In the right hand column you will find a Treasurer's report through November 16, 2002 and a statement of SOSCC financial condition. The new Secretary-Treasurer will receive the cash balance and other assets by January 1, 2003.

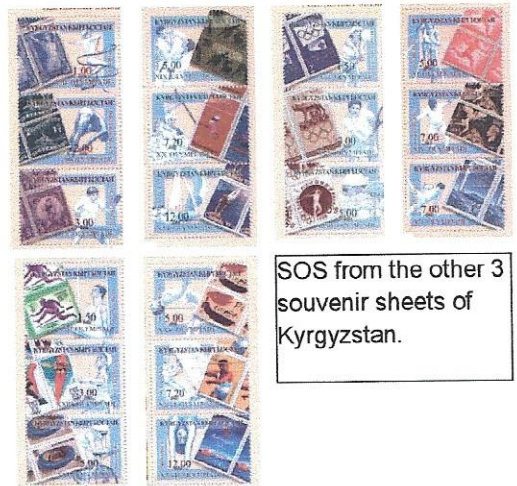
Welcome to new member William Lehne, Dover, NJ.

Report of the Treasurer April 1, 1999 to November 16, 2002

Dues and Donations	\$1,328.00
Lifetime Memberships	1,062.00
Publications	691.00
Other	0.00
Total Revenue	\$3,081.00

Edit-Print-Mail/SOS Signal and Checklist Publications	\$2,561.03
Website/Domain Expense	382.26
Total Expense	\$2,943.29

Net Change in Cash	137.71
Beginning Cash 4/1/99	1,299.82
Ending Cash 11/16/02	\$1,437.53
Production Cash/Postage	113.83
Prepaid Domain Fees	84.00
Total Assets	\$1,635.36
Liability to Life Members	850.00
Net Assets	\$785.36



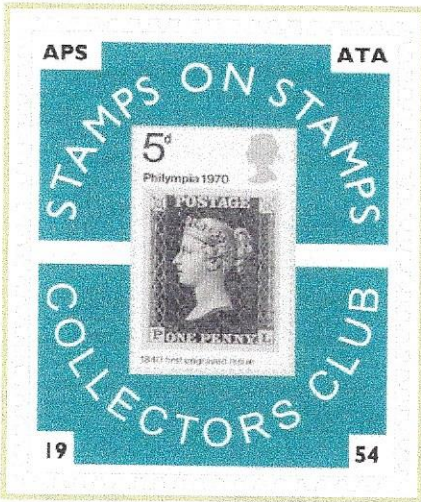
SOS from the other 3
souvenir sheets of
Kyrgyzstan.



Stamps on Stamps Collectors Club
www.stampsonstamps.org

William E. Critzer, Editor
 1360 Trinity Drive
 Menlo Park, CA 94025
 USA

Phone/Fax: 650-234-1136
 Email: wllmcritz@aol.com



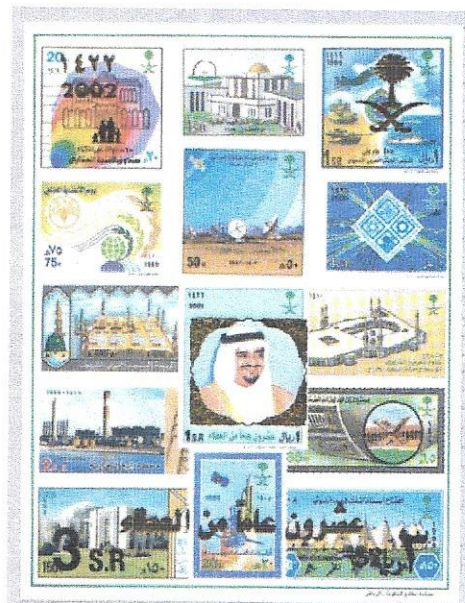
The SOSCC was founded in 1954. It is a non-profit philatelic organization serving a worldwide membership and is open to persons interested in stamp on stamp designs, stamp anniversaries and related topics. Dues are \$9 per year for members residing in North America and \$12 elsewhere.

Officers serve without compensation and are reimbursed only for expenses incurred on behalf of the club. You are cordially invited to associate with us. Please contact the Secretary Treasurer or use our website for more information or to become a member.

President	Wesley Shellen	1650 Sunflower Drive Missoula, MT 59802
Vice President	Gaston Barrette	403-2765 Chemin Sainte-Foy Sainte-Foy, Quebec G1V 4S4 Canada
Sec/Treasurer	Bill Critzer	1360 Trinity Drive Menlo Park, CA 94025
Webmaster	Michael Merritt	73 Mountainside Road Mendham, NJ 07945
New Issues	Lou Guadagno	1772 E. 51st Street Brooklyn, NY 11234
SOS Signal Production	Alf Jordan	156 West Elm Street Yarmouth, ME 04096

Email addresses may be found on the SOSCC website.

More New Issues by Lou Guadagno



Left: Luxembourg September 16, 2002
 Above: Saudi Arabia April 13, 2002



Top: Surinam August 30, 2002
 Below: Cuba February 15, 2002