

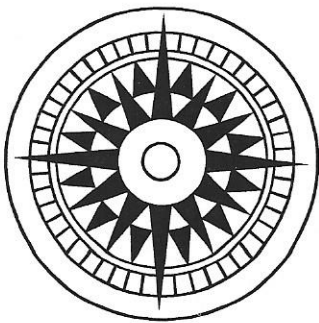
SOS SIGNAL

January 2002

Whole Number 18

Important News

- ◆ Dues are now payable. If you need to pay there is a colored sticker in the upper left corner of this page with the amount on it.
- ◆ A large selection of SOS items are for sale on the American Philatelic Society web site: www.stamps.org.
- ◆ Send me a favorite cover and I will reproduce it in the Signal with your byline. It will be scanned and returned to you promptly.



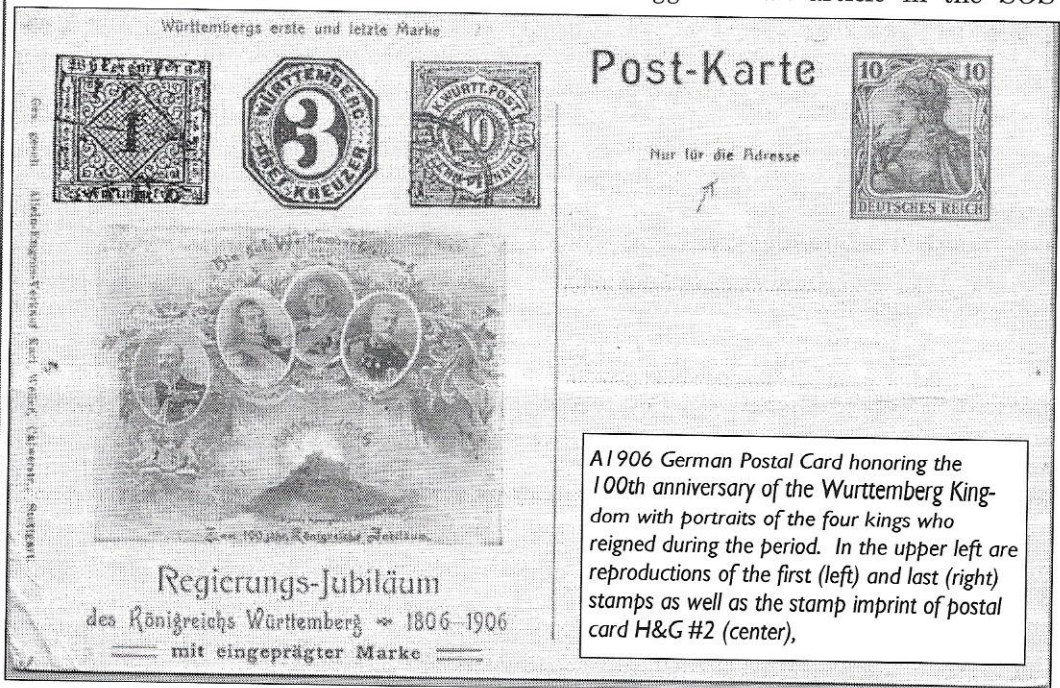
Inside this issue:

Building a Postal Stationery Checklist Gaston Barrette	2
Penny Black Centenary Richard Howard	4
Knokphila 70 Lou Guadagno	5
I Tried It—and Won! Don Mitchell	5
New Issues	6
SOSCU News/Classifieds	7
More New Issues	8

Building a Postal Stationery Checklist by Gaston Barrette

When, four years ago, I wrote to the new editor of the *SOS Signal* that I had in my collection some items of postal stationery with a stamp on stamp on the imprinted stamp design that were not recorded in *ATA Handbook 122 Stamps on Stamps*, I was far from thinking that I was engaging in a search which would result in a list that today is rapidly approaching the one thousand

Detrich's regular feature "Topical Postal Stationery" in *Topical Time*. It soon became evident to me that a stamp on stamp postal stationery list based on the same definitions as the stamp list would be the necessary complement to the general topic. And the logical place to start would be with Detrich's listings. I proposed this idea to the editor who was very interested and suggested an article in the *SOS*



A 1906 German Postal Card honoring the 100th anniversary of the Württemberg Kingdom with portraits of the four kings who reigned during the period. In the upper left are reproductions of the first (left) and last (right) stamps as well as the stamp imprint of postal card H&G #2 (center).

mark. Acknowledging that some items could be missing in the Handbook, the editor asked me to send the list. I must confess that, prior to writing to the editor, I had already developed an interest in postal stationery by reading David

Signal outlining a project.

This being done, I soon began sorting out from the listings in *Topical Time* the items that fitted the agreed definitions. However, these listings started in

(Continued on page 2)

Building a Postal Stationery Checklist

by Gaston Barrette

(Continued from page 1)

the early 1990s and it became evident that other sources were necessary for prior years.

The Higgins & Gage World Postal Stationery Catalog seemed to be the answer because it covered the early issues in the 1850s up to the 1980s. In spite of the fact that it gave information only on the printed stamp (indicium), the whole catalog was inspected, but only a few items were found. It must be remembered that items with a stamp on the cachet or reverse are recorded in the SOSCC Postal Stationery Checklist; they are of the same type as souvenir sheets with a stamp in the margin. For full details of the scope and definitions of the stamp on stamp postal stationery topical refer to the April 1998 issue of the *SOS Signal*.

I tried to fill the gap by contacting some dealers in postal stationery and had some success with a German firm that sent postal cards of the country dating back to the beginning of the 20th century, most of them celebrating the first stamps and postal cards of the German States. This was a precious but limited contribution because the firm's supply of such items was rapidly exhausted.

The Higgins and Gage Catalog is owned by the firm *Classic Philatelics* and I discovered that this dealer has been editing three times a year since October 1983, a bulletin entitled *New Issue Report* that covers world postal stationery and prior to that a letter *The Entire Truth* that began to cover the world with the August 1979 issue. These sources proved to be the best and most reliable on the new issues of postal stationery. I have gone through the complete runs of both these publications; more than two hundred new items have been recorded that need to be seen to make sure that they belong to the topic.

A Michel catalogue covering the printed to private order postal stationery items for the period 1945-1978 covering Germany, Germany-Berlin and the German Democratic Republic is the next item of research. It describes the stamp design as well as the cachet. It will be followed by other selective or specialized listings.

This in a few words is the story of the SOSCC Postal Stationery Checklist. Besides the recording on a regular basis of items from the Reports, the search for older and possibly more recent items is going on. Because of the lack of a world catalogue with a numbering system like Scott, it is impossible to know how many items our list is missing and some items have

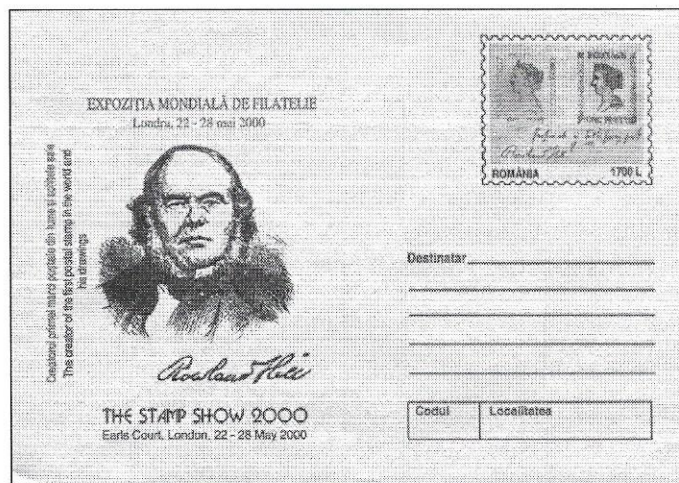
not been seen. One thing seems sure though; from 1979 forward, one can be reasonably assured that the checklist includes the vast majority of postal stationery items.

My Favorites of the Year 2000

The Stamp Show, London, 22-28 May 2000, was the reason for many stamp and souvenir sheet issues. Romania issued a set of three beautiful envelopes shown



The imprinted stamp design has the show logo with GB #1 and the cachet shows the first stamp of each of the two countries greater in size than the originals. The flags of the countries complete the design. The actual size of this envelope is 160x115 mm.



The indicium depicts two of Rowland Hill's essays of GB #1. The cachet is a portrait of Rowland Hill with signature and he is described in Romanian and English as: "The creator of the first postal stamp in the world and his drawings". The actual size of this envelope is 160x115 mm.

Building a Postal Stationery Checklist

by Gaston Barrette

(Continued from page 2)

and described nearby. Another item whose exotic charm I find remarkable is a Korean postal card issued in June 2000 for the 100th anniversary of its postal stationery; this card is shown at right. Finally, from the Czech Republic, a country that is prolific in issuing each year postal cards for of the world's nu-

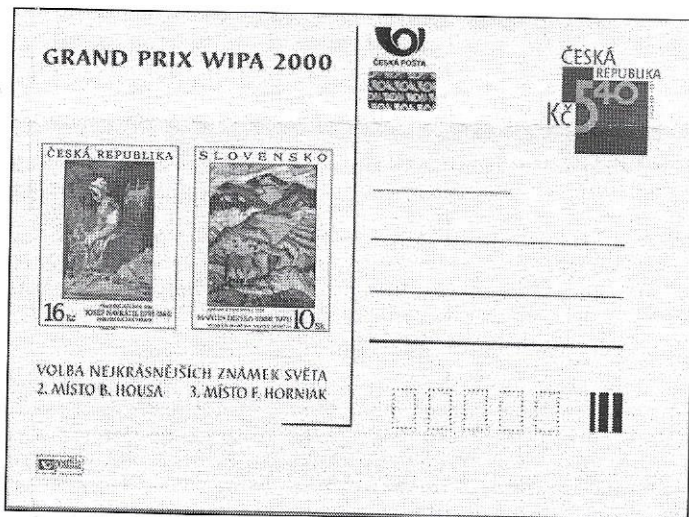
merous philatelic exhibitions. Many other postal stationery issues of last year would deserve to be mentioned and shown were the space available. I hope my choices have raised your interest in exploring what is available in this collectible area. The latest checklist is available postpaid for \$2 US currency. Please send your orders to the editor at the address on page 8.



The imprinted stamp design reproduces Romania #1. The cachet pictures a heraldic red lion holding a big magnifying glass behind which one finds GB #1 and all of this is on the background of a green world map. The actual size of this envelope is 160x115 mm.



The stamp design depicts the first stamp design used on Korean postal cards and the cachet a picture of the first postal card and a current postal card with a stamp design of flowers. Size is 148x100.



The cachet shows two stamps that won the Grand Prix WIPA 2000 from the two countries that formerly were Czechoslovakia; Czech Republic #3076 and Slovakia #314. The stamps reproduce paintings by native artists of the two countries. Actual size is 148x105 mm.

Gaston Barrette is Vice-President of SOSCC. If you've got some SOS postal stationery matters to bring to his attention, he can be reached by email at: g.barrette@globetrotter.net, or by regular mail at his address on page 8.

Penny Black Centenary—British Guiana 1940

By Richard B. Howard

One of the most elusive of the 1940 commemorative items is that from British Guiana, still, as modern Guyana the only English-speaking country on the South American continent.

Sponsored by the local stamp club, the Victory Philatelic Society, based in Georgetown, a rubber stamp was accepted by the Colonial Post Office for use in the capital's A.P.O. for one day only, May 6, 1940.

The special cancel, a double circle 32 mm across and applied in red ink, is inscribed within the outer circle 'Centenary of the Adhesive Postage Stamp', with 'May 6 1840-1940' in two lines across the center.

Local covers were franked with the then definitive George VI stamp featuring the famous Kaieteur Waterfall and machine cancelled with the publicity slogan 'Kaieteur Waterfall—a World's Wonder', while most of those destined for the UK were franked with the 4 cents definitive and hand cancelled '6 MY 40'.

The rubber stamp was destroyed after the closure of the Georgetown head Post Office on 6 May,

in the presence of Post Office officials and a representative of the Victory Philatelic Society.

Because of the time at the height of the Battle of Britain in World War II, little was known of the issue to the outside world until covers filtered through, and most of those surviving would appear to be those whose senders had knowledge of the commemoration.



Penny Black Centenary—Sweden 1940

By Richard B. Howard

In 1940 the Swedish Postal Museum in Stockholm, capital of neutral Sweden, produced commemorative covers and cards in commemoration of the Centenary of the Penny Black. The common design is of a reproduction of the Penny Black center, with a 19th century mail coach above and a modern mail plane below, with a surround of the inscription '1840 The Postage Stamps Centenary 1940' in four languages, Swedish, English, German and French, all in red, a striking frame for the black stamp.

It was available at the museum Post Office on May 6 together with a specially produced hand cancel 35 mm across with 'Postmuseum' above, 'Stockholm' below, 'Stamp Centenary' in Swedish within a smaller inner circle, and '6 MAJ 1940' across the center. The covers have an insert in Swedish and English 'Souvenir from the Swedish G.P.P Centenary Exhibition 1940 of the World's First Postage Stamp—the Penny Black 1840' the same printed on the reverse of the cards.

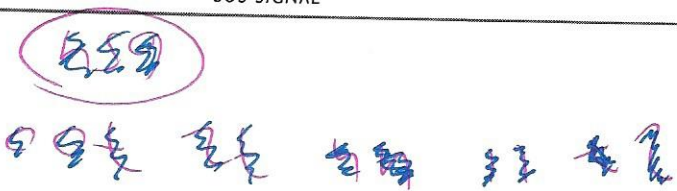
Of additional interest is the fact that the illus-

trated card is franked with the Swedish stamp of 1938 commemorating 300 years of Swedish emigrants to the United States, the same stamp reproduced on the joint US/Swedish issues of 1986.



Knokphila 70

By Lou Guadagno



Last year at a N.Y.C. stamps show, I was unsuccessfully making the rounds of the dealers looking for anything in stamps on stamps or the stamps reproduced on them, when I made a discovery of a previously unidentified Type A stamps that was issued thirty years ago!

Back in the Sept/Oct 1971 Signal, the new issue column noted a Central African Republic issue of 15 Sep 1970 for Knokphila 70, the 6th Philatelic Exhibition at Knokke. The stamps was described as an imperforate between triptych of two 100fr stamps with a separating label that contained a perforated pseudo stamp. Since then, the issue CAR #C82 has been listed as a symbolic design in the SOSCC checklists. I collected symbolic issues then and put the stamp on my want list, but I never saw the stamp in all the years since except for the catalog illustration. It was apparent even from the tiny reproduction that the rectangular "stamp" with two side panels and a central portion with a man's bust did not match any Belgian or CAR stamp. Later, I dropped collecting these designs in lieu of Type A only, and forgot about this issue.

When I found the C82 in the dealer box, I examined it as a curiosity I hadn't come across in thirty years of show surfing, and to my surprise I recognized it as a Type A stamp on stamp design.

The first thing I read on the stamp was that Knokke was in Belgium and not the CAR as I believed (subsequently I found the footnote to C82 in Scott's that states this), and that the "stamp" was part of the emblem of the Knokke Philatelic Club. With this, I

took a closer look at the 3mm x 3mm central portion, saw the tiny inscription above and below the bust and realized it was a simplified reproduction of Belgium #2. The bust was of King Leopold I and the inscriptions were POSTES at the top and VINGT CENTs below (these can actually be read with a magnifier). Behind the bust, the background is white instead of the dark shadow and swirls of the original and this is the major simplification.



I'll be the first to admit this is not a major find, but I think it is an interesting example of a stamp on stamp where it is not the focal point of the design. It is also apparent that the KPC knew from the first that this was a SOS issue, and SOSCC had and has active members in Belgium who appear not to have picked up on it.

I haven't had a chance to try to make contact, but an envelope or letterhead with a full size KPC emblem would augment the page with the stamp very nicely. I've also wondered if any special souvenirs with the stamp were ever prepared by the KPC—even though the stamp was issued two months after the Exhibition ended!

I Tried It—and Won!

By Don Mitchell

Here is confirmation from Don Mitchell of Tigard, Oregon that the self importing methods used by Martin Hirschbühl of Switzerland work (see Signal #16). Don describes his success in an article he wrote for the Oregon Stamp Society journal entitled *I Tried It*. Following is the relevant part of Don's article.

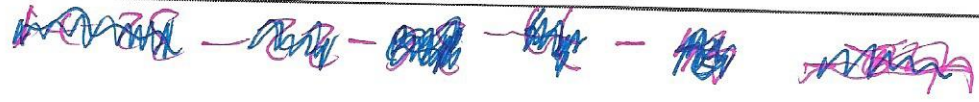
"I am an sos collector. I wanted the single Slovakian, low value issue in June 2001 for the 150th anniversary of the first stamp used in Slovakia. Too new for dealers. I composed a letter of request and sent it to the Philatelic Center PO in Bratislava, Slovakia. My letter included my name, address, the single stamp desired

and mention of \$2 USA cash enclosed. Also enclosed were recent 12 used pictorial USA stamps as a gift for a Slovakian collector. The letter did not weigh over 1/2 ounce. Off it went and I waited two months for a reply. I waited and waited. Finally, I wrote a post card referring to my first letter, sending it to the General Director of PO in Bratislava; a good month passed and then "bingo".

I returned home on October 2 with a brand new hip and on that day a letter (hand addressed) from Slovakia arrived. Enclosed were six (6) copies of the one stamp I ordered and a two page form covered with numbers and my name; no other writing.

I tried it and won (with perseverance)."

Congratulations, Don! Are there additional self importing success stories out there? Please send them to the editor.

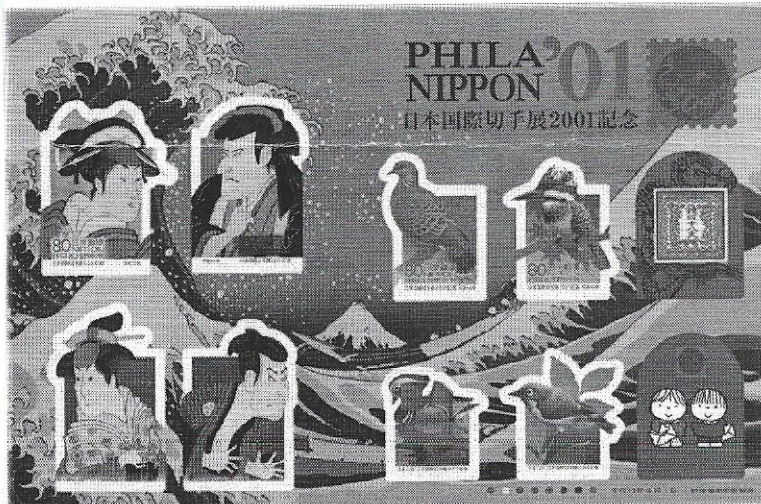


New Issues

edited by Lou Guadagno

(new on list = *)

<u>Date</u>	<u>Country</u>	<u>Values</u>	<u>Stamp Reproduced</u>	<u>Reason for Issue</u>	<u>Scott #</u>
✓ 01 06 16	Argentina	* 25,75c	Argentina #35	BELGICA 2001 (SIS stamp in margin)	To come
✓ 01 10 27	Argentina	* 25,75c	Denmark #2, Argen-Cordoba #1	HAFNIA 2001 (SIS stamp in margin)	To come
✓ 01 10 16	Denmark	* 4-7 kr	Denmark #757, 1000, six others	HAFNIA 2001 (4v, + SIS)	To come
✓ 01 09 04	Estonia	* 4.40m	Estonia #200	10th Anniv. Stamp Restoration	To come
✓ 01 05 24	Falkland Islands	3p-1.50£	Falkland Islands #1	Age of Victoria (7v-1 sos)	781
✓ 01 10 16	Greenland	* 5.75-21k	Essays from 1932	The stamps that were never issued	To come
✓ 01 04 18	G.B.-Isle of Man	29-50p	GB #MH1, 300, Isle of Man #3, 8	75th Birthday of Queen Elizabeth II (Sheet of 4)	900a-d
✓ 01 10 16	G.B.-Isle of Man	* 29-50p	GB #MH1, 300, Isle of Man #3, 8	HAFNIA 2001 (Overprint on 900)	To come
✓ 01 08 25	Hong Kong PRC	* 1.80-3.10\$	HK #66, China #tbi, 893	160th Anniv., Hong Kong Post (Bklt pane 4v)	To come
✓ 01 05 25	Hungary	36, 90ft	Hungary #P2, 2	74th Stamp Day	3762-3
✓ 01 03 31	Italy	* 3x800l	#1, Tuscany, Sardinia, Lo-Venetia	150th Anniversary of these first stamps	2390-2
✓ 01 08 01	Japan	* 5x50, 5x80	Japan #1	Philanippon 01, (10v-1sos) self adhesive	To come
✓ 01 04 27	Korea (South)	2 x 170w	Greece #120	Publicity for International Olympic Fair	2048-a
✓ 01 10 02	Mauritius	* 15R	Mauritius #361	Centenary, Visit of M. Gandhi	To come
✓ 01 05 15	Micronesia	6x60c, \$2	GB #1 in margin	Death Centenary of Queen Victoria SIS	441-42
✓ 01 06 00	Moldova	40b-3L	Moldova Mi #1,2,3	10th Anniv., Stamps of Moldova (SIS-3v)	382a-c
✓ 01 05 14	Monaco	2.70fr	Monaco #1952	50th Anniv., Prince Rainier III	To come
✓ 01 04 30	Montserrat	1.00-3.00\$	Montserrat #686,661	Famous Stamp Personalities (4v-1 sos, SIS)	1026-30
✓ 01 10 12	Netherlands	* 2x39c	Netherlands #1 in margin	Publicity, AMPHILEX 2002	To come
✓ 01 01 31	Niue	* 70c, \$3	Niue #1, 34	Centenary, Stamps of Niue	753-4
✓ 01 10 01	United States	* 10x34, 21c	US #3392b	Looney Tunes, Porky Pig + imprinted postcard	To come
✓ 00 03 04	Kuwait	* 50-350f	Kuwait #1012, other countries	125th Anniversary UPU (Bklt pane 3v + SIS)	1460A-D



Left to right clockwise, see descriptions in table above:
Japan, Hungary, Estonia, South Korea, Monaco



Classifieds

featuring
dealer-members
in three
countries



WORLDWIDE FDC, COVERS, POSTMARKS

Register your interests to receive relevant lists
Stamp on Stamp list available, want lists invited

JOHN EMBREY

Nimrod House, Muckhart, Dollar
Clackmannanshire, Scotland FK14 7JH

Telephone 01259 781279 Email: embrey@waitrose.com

TOPICAL FIRST DAY COVERS

Dozens of topics available, including of course,
Stamps on Stamps.

Send a SASE for photocopies of items in stock
for your consideration

LES ROSEN

7724 Matchwood Lane Liverpool, NY 13090

Email: FDCsRFUN@aol.com

TIMBRES THEMES (Topical Stamps)

1221 Fleury E CP 35046, Montreal, Canada H2C 3K4

NEW ISSUES, WANT LISTS, TOPICAL APPROVALS

SOSCC members will be given a privileged 10% discount.

Free price list available. MasterCard and Visa.

Tel 514-383-6248 Email: janiced@topicstamps.com

Fax 514-388-0157 Internet: http://www.topicstamps.com

SOSCC News

By Bill Critzer

Welcome to new members Michael G. Conner, Trussville, Alabama; Glenn Estus, Westport, New York; and Manuel Lopez Roldan, Arboledas San Ignacio, Mexico.

Mary Skavaril has donated \$100 to SOSCC in memory of her husband Russell V. Skavaril, "who received so much enjoyment through the club over the years".

Dues are now payable for 2002! The annual dues are still \$9 for North American addresses and \$12 for those with addresses elsewhere in the world. Many of you have paid for multiple years or are lifetime members. However, if your 2002 dues are payable you will find a round colored sticker on the first page with the amount due written in black ink. Please send your dues today.

Do you have a favorite item in your SOS collection? Let me know what it is and get your name featured in a byline in a forthcoming issue. Just tell me a little about it and why you like it. If it interests you it will interest others. My contact addresses are on page 8.

Don't forget some of the subtopics in our topic, for example: cinderellas, souvenir cards, SUGs, ugliest, most beautiful, most meaningful to you, etc. There is no end of things to write about in our marvelous topic. Take your cue from Richard Howard, or Harry Skallerup or Gaston Barrette or Wes Shellen or Judy Hornaday, or any of the other fourteen authors published in the *SOS Signal* since October 1997.

I want to thank you for your continued support and contributions to our journal. I wish each of you and your family the best for the coming year.

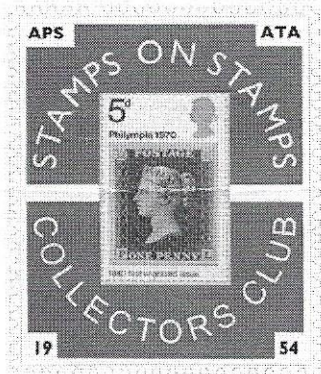


The first day cancelled souvenir card is courtesy of Michael Merritt. It has original (?) artwork affixed, and is signed by the artist E. Welenofsky. The artwork suggests that the original conception of this 1961 Austrian semi-postal (Scott #B303 issued December 1) was a stamp on stamp design. Alas, this design element was lost in execution, and the final stamp, which appears below the artwork, is a simple and almost stark portrayal of Rust's post office. Rust is known for its wine and storks. This is an SOS that almost was!

STAMPS ON STAMPS COLLECTORS CLUB

William E. Critzer
Secretary-Treasurer and Editor
1360 Trinity Drive
Menlo Park, CA 94025

Phone/Fax: 650-234-1136
Email: wcritzer@avenidas.org



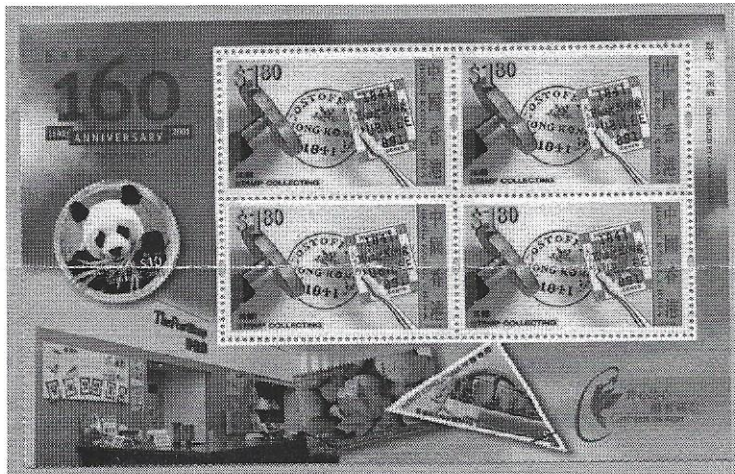
Visit us on the web:
www.stampsonstamps.org

The SOSCC was founded in 1954. It is a non-profit philatelic organization serving a worldwide membership and is open to persons interested in stamp on stamp designs, stamp anniversaries and related topics. Dues are \$9 per year for members residing in North America and \$12 elsewhere. Officers serve without compensation and are reimbursed only for expenses incurred on behalf of the unit. You are cordially invited to associate with us. Please write to the Secretary Treasurer for more information or to become a member.

President	Wesley Shellen	1650 Sunflower Drive Missoula, MT 59802
Vice President	Gaston Barrette	403-2765 Chemin Sainte-Foy Sainte-Foy, Quebec G1V 4S4 Canada
Secretary-Treasurer	Bill Critzer	1360 Trinity Drive Menlo Park, CA 94025
Webmaster	Michael Merritt	73 Mountainside Road Mendham, NJ 07945
New Issues	Lou Guadagno	1772 E. 51st Street Brooklyn, NY 11234

More New Issues

By Lou Guadagno



Above: Denmark
Upper Left: Hong Kong
Left: Italy

See descriptions in table on page 6.